

# Ecostyle Radiator Install

Applies to: RCV, CV and PCV Radiators

**Step 1.** Open bottom of radiator packaging and remove the bracket package.



**Step 2.** Locate studs on the wall you want to mount the brackets to. Mount the brackets so the radiator is a minimum of 4 inches off the floor.

- Failure to allow 4" minimum clearance below radiator can significantly reduce performance.

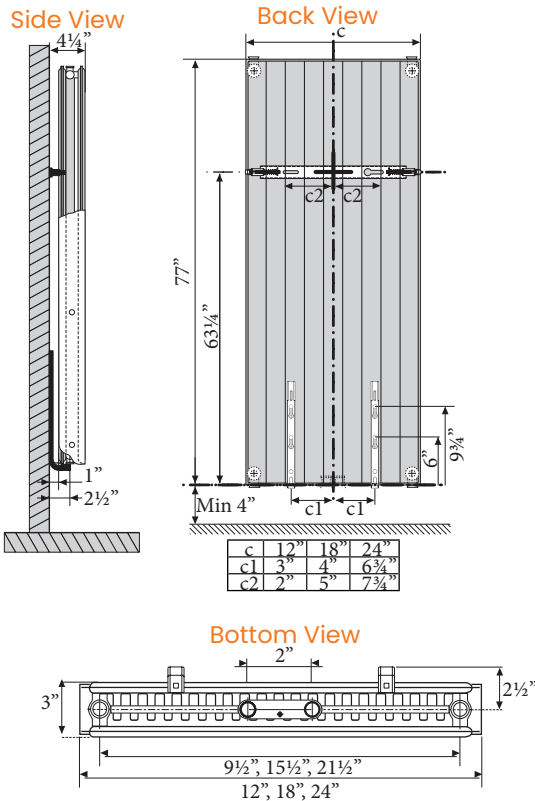
- Attach brackets firmly to the studs using supplied hardware making sure the spring loaded connection of bracket is on top. If needed for spot without stud, use supplied anchor to attach bracket to wall.

- Use a level to plumb the brackets.

- All radiators up to 71" long use 2 brackets.

Rough-In Dimensions

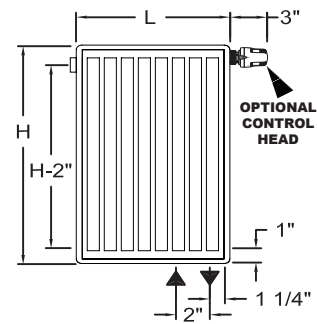
## Vertical Type 21



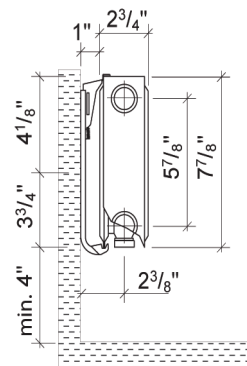
NOTE: For thermostatic control, MUST use external thermostatic valve.

## Horizontal Type 21 & 22

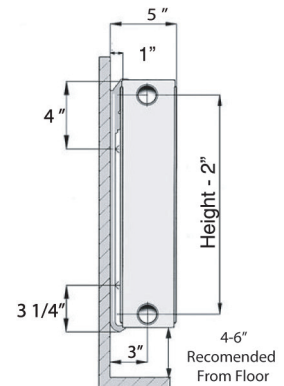
### Horizontal Type 21 & 22



### Type 21



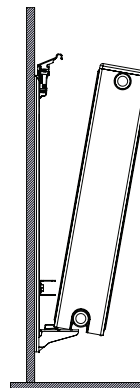
### Type 22



**Step 3.** Mount the radiators onto the brackets. Set the backside, bottom of radiator onto lower hook, then latch the top onto the top grill to secure into position.

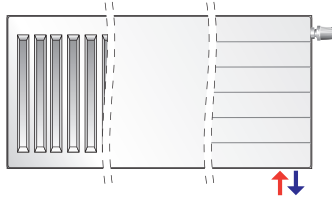
\*\* The anchors supplied in this kit are for masonry. Do not use on drywall. Drill bit size is 25/64"

\*\* It is recommended you space the wall brackets to catch the wall studs. If that is not an option, we recommend adding blocking between the studs.

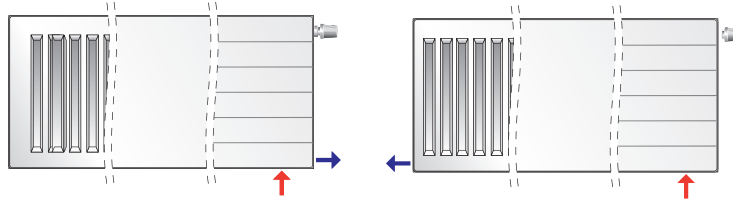


**Step 4.** Choose how you want to pipe the radiator.

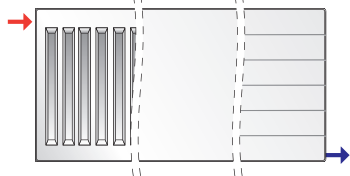
**Bottom Connection**  
(preferred for maximum efficiency)



**Intermediate Connection**

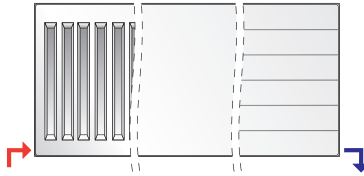


**Flow Through Connection**



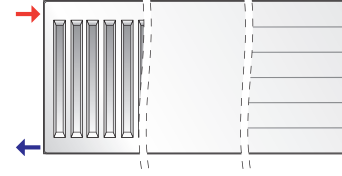
(Must remove thermostatic insert)

**Opposite Ends Connection**



(Must remove thermostatic insert)

**Same End Connection**



(Must remove thermostatic insert)

**Note:** when installing radiators in series/loop it's recommended to have no more than 3 radiators in line.

**Step 5.** Remove the plastic paint plugs from the bottom two tappings of the radiator. If you are using the side connections for supply and return tappings, make sure to remove plastic plugs on the bottom and replace with the removed plugs from the side of the radiator.



If you choose to use the side connections for supply be sure to remove the internal thermostatic insert and plug the port.

Additional plugs are offered  
RV-PV SET

**Step 6.** Choose the fittings and valves you want to use. Note: Valves are not required, however make it easy to divert or isolate the radiators.



**VALVES FOR BOTTOM CONNECTION**

PART #	DESCRIPTION
RV-NA10530	1/2" Straight Isolation
RV-NA10531	1/2" Angled Isolation
RV-NA10532	1/2" Straight Diverter
RV-NA10533	1/2" Angled Diverter



**VALVES FOR SIDE CONNECTIONS**

PART #	DESCRIPTION
RV-338452	1/2" Angled Thermostatic
RV-339452	1/2" Straight Thermostatic
RV-342452	1/2" Angled Shutoff
RV-343452	1/2" Straight Shutoff



**ALL FITTINGS COME WITH CONICAL RADIATOR ADAPTER  
ALL FITTINGS SOLD AS A PAIR**

PART #	DESCRIPTION
RV-NA10536	3/8" Nominal PEX
RV-NA10534	1/2" Nominal PEX
RV-NA10537	5/8" Nominal PEX
RV-NA10535	1/2" Copper Sweat
RV-NA10555	1/2" Copper Compression

**Step 7.** Choose your finish accessories.



Thermostatic control head fits radiator valves.  
Set point locking mechanism.  
Range stop adjustment.  
Built-in sensor with liquid-filled element.  
Fits valve 220, 221, 338 and 339 series.  
Graduated scale from \* to 5 corresponding to a temperature scale adjustment range of 45-82°F (7-28°C).

PART #	DESCRIPTION
RV-200000	Non Electric Actuator Head



Fits dual panel radiator valves 301 in white ABS.  
Outlet center distance: 2" on center.

PART #	DESCRIPTION
RV-449740	2 Pipe Flex Escutcheon
RV-12550	2 Pipe Rigid Escutcheon
RV-8W SNAP	8" Snap On Pipe Cover
RV-39W SNAP	39" Snap On Pipe Cover