



**ELECTRIC &
HYDRONIC**

INTERLUDE

The Interlude Towel Warmer combines simplicity and elegance in a sleek flat-tube design. Crafted from high-quality steel and finished in classic RAL 9016 White, it offers both style and functionality. Available in hydronic or electric versions, the Interlude is a versatile choice that suits a wide range of bathroom projects.



Hydronic (PUR-INTH2WH)
in White



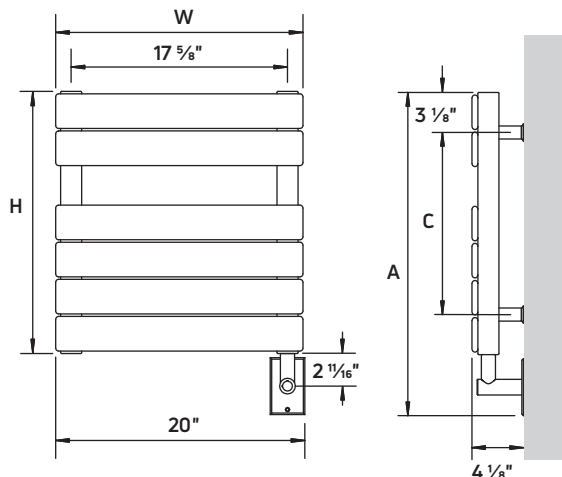
Electric (PUR-EINTH1WH)
in White



MYSON 
comfort delivered by PURMO

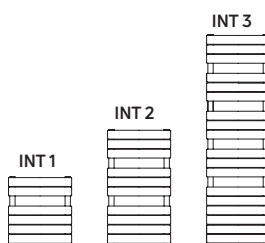
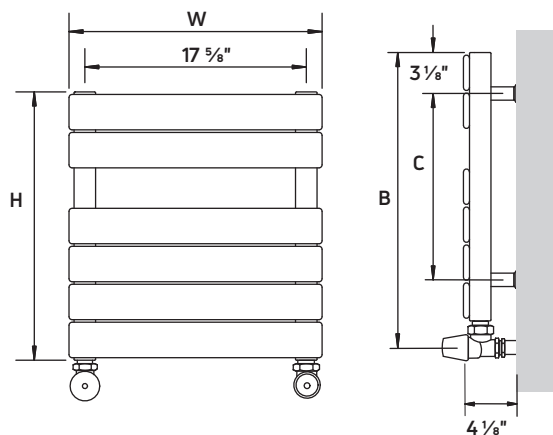
Dimensions

ELECTRIC



MODEL	Height (H) (inch)	Width (W) (inch)	Electric Weight (lb)	Hydronic Weight (lb)	A (inch)	B (inch)	C (inch)
INT 1	20 7/8"	19 1/16"	40	40	22 1/2"	25 15/16"	13"
INT 2	35 5/8"	19 1/16"	48	48	37 1/4"	40 9/16"	24 7/16"
INT 3	65 13/16"	19 1/16"	54	54	66 13/16"	70 1/8"	57 1/2"

HYDRONIC



General Specifications

CERTIFICATION
Produced in a ISO 14001:2004 certified facility. Manufactured and 3rd party tested by ETL according to UL-499 and CAN/CSA-E60335-2-43.

WARRANTY
5 year guarantee from date of purchase to the original owner against manufacturing defects. Visit our website for warranty details.

SYSTEM
MYSON hydronic towel warmers are for properly designed **closed loop (not open loop and/or drinking water systems)** hydronic heating systems in residential and commercial applications.

CONNECTIONS
4 x 1/2" BSP as standard. Valves and fittings are available as a separately purchased option (refer to page 28).

AIR VENTS & PLUG
Included in the packaging installed for Hydronic version.

OPERATING PARAMETERS
Maximum sustained working pressure is 77psi. Maximum sustained temperature is 230°F.

MATERIAL
INTERLUDE towel warmers are produced with cold-rolled steel. Profile 2" Flat tubes.

ACCESSORIES
Please refer to page 28, 29 in 2026 product guide for complete listing of available accessories.

FINISH OPTION
☐ White (WH)

HEATING FLUID
Electric towel warmers are filled with non-toxic glycol based fluid to facilitate heat transfer.

APM® TECHNOLOGY
APM® represents the most advanced element technology available. It is an economical, self-regulating element. When it reaches the required temperature, it reduces power consumption accordingly. There is no need for a thermostat.

Electric Specifications

Heat Outputs

ORDER CODE		Stock Finishes	Special Order Finishes	Hydronic Heat Outputs @ ΔT 180°F	Hydronic Heat Outputs @ ΔT 140°F	Electric Heat Outputs	
Straight				Btu/h	Btu/h	Watts	Amps
				PA*	PA*		
INTERLUDE - Hydronic							
Order Code	Legacy Code						
PUR-INTH1WH	INTH1	WH		1,188	657		
PUR-INTH2WH	INTH2	WH		1,865	1,024		
PUR-INTH3WH	INTH3	WH		3,243	1,760		
INTERLUDE - Electric							
Order Code	Legacy Code						
PUR-EINTH1WH	EINTH1	WH				250	2.27
PUR-EINTH2WH	EINTH2	WH				400	3.46
PUR-EINTH3WH	EINTH3	WH				500	4.2

NOTE: Be sure to include the FINISH suffix at the end of the order code when placing your order.

*PA= Painted Finish **PL= Plated Finish