

Overview:



- Standard Features**
- Internal thermostatic valve Body
 - Contoured side panels and grille
 - Adjustable mounting brackets
 - Installed, plugs, and air vent

Sales Features:

Elegant steel panel radiator design | White enameled finish for scratch & corrosion resistance
Provides both radiant and convective heat | Well suited for standard efficiency and condensing boilers
Easy to sub-zone | Available Up-sell to custom paint, selecting any RAL color

Engineering Specifications:

Standard Description:

CV, RCV, PCV Type 33 radiators have welded double water panels and three rows of convectors. This radiator is also equipped with a built-in thermostatic valve insert.

Standard Material:

18 Ga. Construction High Quality, deep-drawing, low carbon, cold rolled steel sheet.

Standard Operating Pressure:

Standard Design: 145 psi Maximum operating temperature: 230° F

Standard Connections:

CV, RCV, PCV radiators have (6) ½" connections; (2) on each side top and bottom, and (2) on the bottom right 2" center to center.

Standard Finish:

1. Undercoat: electrophoretic, using water-soluble paints, conforming to DIN 55900 part 1, baked at 347° F;
2. Finish coat: RAL 9016 white electrostatic powder coating, conforming to DIN 55900 part. This coat is baked at a temperature of 374° F.

OPTIONAL-

Large range of RAL colors available at a supplementary charge.

Standard Hardware:

Includes all necessary wall mounting brackets for proper installation. Pedestal floor mount optional.

Standard Warranty:

Purmo radiators come standard with a ten (10) Year Limited Warranty.

Distributor: QHT Inc. | 3560 Lafayette Rd | Bldg 2, Unit "A" | Portsmouth | NH | 03801

Manufacturer: Purmo Group Ltd | Bulevardi 46| P.O. Box 115 | FI-00121 Helsinki | Finland

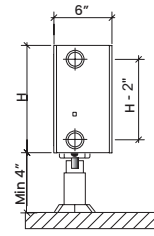
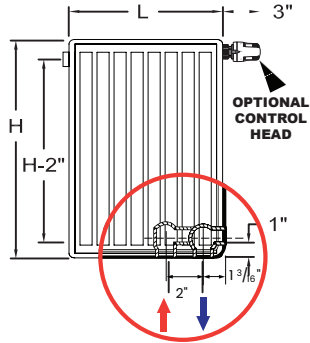
Purmo Group / QHT Inc both reserve the right to make changes without notice due to continuing engineering and technological advances

www.purmoUSA.com
800-501-7697

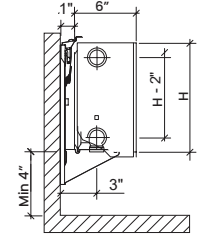


ECOSTYLE CV, RCV, PCV
Type 33
Panel Radiators

Actual Dimensions



Pedestal Mount Side View



Wall Mount Side View

Radiator Specifications (available in CV, RCV & PCV models)

Height (inch)	Length (inch)	Output (BTU/HR) @ 180°F x 68°F**	Output (BTU/HR) @ 140°F x 68°F**	Weight (lbs)		Water Content (gal)	Equivalent Baseboard @ 180°F (ft)
				CV	RCV & PCV		
8" (Type 33)	24"	2235	1205	32	36	.61	3.72
	28"	2607	1406	38	42	.72	4.35
	32"	2980	1607	43	48	.82	5.00
	36"	3352	1808	49	54	.94	5.60
	40"	3735	2009	54	60	1.02	6.22
	43"	4097	2210	59	66	1.12	6.83
	48"	4470	2411	64	71	1.23	7.50
	56"	5214	2812	75	83	1.43	8.70
	63"	5959	3214	86	96	1.64	9.94
	71"	6704	3616	96	107	1.84	11.18
	79"	7449	4018	107	119	2.05	12.42
91"	8567	4620	123	137	2.35	14.28	
102"	9684	5223	139	154	2.66	16.14	
118"	11174	6026	161	179	3.07	18.63	
12" (Type 33)	16"	1797	969	24	27	.54	3.00
	20"	2245	1211	30	33	.68	3.75
	24"	2693	1452	36	40	.80	4.50
	32"	3591	1937	48	53	1.07	6.00
	40"	4490	2422	60	67	1.34	7.49
	48"	5389	2906	72	80	1.61	9.00
	56"	6287	3391	84	93	1.87	10.50
	63"	7183	3874	96	107	2.14	12.00
	71"	8081	4359	108	120	2.41	13.50
	79"	8980	4843	120	133	2.68	15.00
	91"	10326	5569	138	153	3.08	17.21
102"	11673	6295	156	173	3.48	19.50	
118"	13470	7265	180	200	4.02	22.50	
16" (Type 33)	16"	2552	1531	27	30	.8	4.25
	24"	3825	2295	41	46	1.2	6.40
	32"	5101	3060	54	60	1.6	8.50
	40"	6377	3826	68	75	2.0	10.62
	48"	7653	4592	81	90	2.4	12.75
	56"	8929	5357	95	105	2.7	14.88
	63"	10201	6121	108	120	3.1	17.00
	71"	11477	6886	122	135	3.5	19.13
	79"	12753	7652	135	150	3.9	21.30
	91"	14668	8801	156	173	4.5	24.50
	102"	16578	9947	176	195	5.1	27.64
118"	19130	11478	203	225	5.9	31.89	

Height (inch)	Length (inch)	Output (BTU/HR) @ 180°F x 68°F**	Output (BTU/HR) @ 140°F x 68°F**	Weight (lbs)		Water Content (gal)	Equivalent Baseboard @ 180°F (ft)
				CV	RCV & PCV		
20" (Type 33)	16"	2727	1471	41	46	.87	4.54
	20"	3407	1837	52	58	1.09	5.68
	24"	4087	2204	61	68	1.30	6.82
	32"	5450	2939	82	91	1.73	9.10
	40"	6814	3675	102	113	2.17	11.35
	48"	8177	4410	122	135	2.60	13.63
	56"	9540	5145	143	159	3.03	15.90
	63"	10900	5879	163	181	3.46	18.17
	71"	12264	6614	184	204	3.90	20.44
	79"	13627	7350	204	226	4.33	22.75
	91"	15671	8452	235	261	4.98	26.11
102"	17714	9554	265	294	5.63	29.53	
118"	20441	11024	306	340	6.50	34.06	
24" (Type 33)	16"	3157	1703	49	54	1.04	5.26
	20"	3947	2129	62	69	1.31	6.58
	24"	4733	2552	73	81	1.56	7.89
	32"	6311	3404	98	109	2.08	10.52
	40"	7890	4255	122	135	2.60	13.15
	48"	9469	5107	147	163	3.12	15.79
	56"	11047	5958	171	190	3.64	18.42
	63"	12623	6808	196	218	4.16	21.03
	71"	14201	7659	220	244	4.68	23.67
	79"	15780	8511	245	272	5.20	26.30
	91"	18148	9788	282	313	5.98	30.25
102"	20513	11063	318	353	6.76	34.20	
118"	23670	12766	367	407	7.80	39.45	
36" (Type 33)	16"	4333	2337	74	82	1.40	7.22
	20"	5419	2923	93	103	1.77	9.03
	24"	6503	3507	111	123	2.10	10.84
	32"	8669	4675	147	163	2.80	14.45
	40"	10836	5844	184	204	3.50	18.06
	48"	13002	7012	221	245	4.20	21.67
	56"	15168	8181	258	286	4.91	25.28
	63"	17338	9351	295	327	5.61	28.90
	71"	19505	10519	332	369	6.31	32.50
	79"	21671	11688	369	410	7.01	36.20

**outputs based on water supply temperatures @ 20°Δ T x 68°F room temperature
 All CV, RCV, PCV Radiators:
 Test Pressure: 191 psi - Max Operating Pressure: 147 psi

Distributor: QHT Inc. | 3560 Lafayette Rd | Bldg 2, Unit "A" | Portsmouth | NH | 03801

Manufacturer: Purmo Group Ltd | Bulevardi 46| P.O. Box 115 | FI-00121 Helsinki | Finland

Purmo Group / QHT Inc both reserve the right to make changes without notice due to continuing engineering and technological advances

www.purmoUSA.com
 800-501-7697

