

Overview:



- Standard Features**
- Internal thermostatic valve Body
 - Contoured side panels and grille
 - Adjustable mounting brackets
 - Installed, plugs, and air vent

Sales Features:

Elegant steel panel radiator design | White enameled finish for scratch & corrosion resistance
Provides both radiant and convective heat | Well suited for standard efficiency and condensing boilers
Easy to sub-zone | Available Up-sell to custom paint, selecting any RAL color

Engineering Specifications:

Standard Description:

CV, RCV, PCV Type 33 radiators have welded double water panels and three rows of convectors. This radiator is also equipped with a built-in thermostatic valve insert.

Standard Material:

18 Ga. Construction High Quality, deep-drawing, low carbon, cold rolled steel sheet.

Standard Operating Pressure:

Standard Design: 145 psi Maximum operating temperature: 230° F

Standard Connections:

CV, RCV, PCV radiators have (6) ½" connections; (2) on each side top and bottom, and (2) on the bottom right 2" center to center.

Standard Finish:

1. Undercoat: electrophoretic, using water-soluble paints, conforming to DIN 55900 part 1, baked at 347° F;
2. Finish coat: RAL 9016 white electrostatic powder coating, conforming to DIN 55900 part. This coat is baked at a temperature of 374° F.

OPTIONAL-

Large range of RAL colors available at a supplementary charge.

Standard Hardware:

Includes all necessary wall mounting brackets for proper installation. Pedestal floor mount optional.

Standard Warranty:

Purmo radiators come standard with a ten (10) Year Limited Warranty.

Distributor: QHT Inc. | 3560 Lafayette Rd | Bldg 2, Unit "A" | Portsmouth | NH | 03801

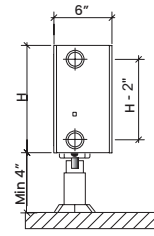
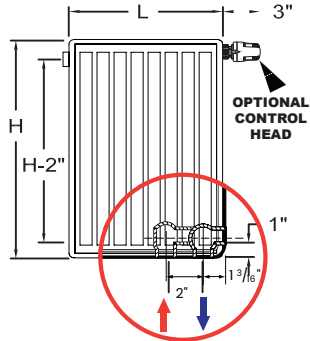
Manufacturer: Purmo Group Ltd | Bulevardi 46| P.O. Box 115 | FI-00121 Helsinki | Finland

Purmo Group / QHT Inc both reserve the right to make changes without notice due to continuing engineering and technological advances

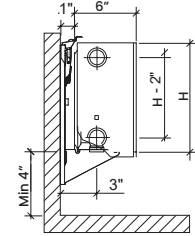
www.purmoUSA.com
800-501-7697



Actual Dimensions



Pedestal Mount Side View



Wall Mount Side View

Radiator Specifications (available in CV, RCV & PCV models)
Height: 16"

Length (Inch ⁴)	AWT In Radiator (0F)							
	180	160	140	130	120	110	100	90
16	3211	2493	1822	1507	1208	925	663	425
20	4014	3116	2277	1884	1510	1157	829	531
24	4812	3735	2730	2258	1810	1387	994	636
28	5615	4359	3186	2635	2112	1618	1160	742
32	6418	4982	3641	3012	2413	1850	1325	848
36	7221	5605	4097	3389	2715	2081	1491	955
40	8024	6228	4552	3765	3017	2312	1657	1061
44	8827	6851	5008	4142	3319	2544	1823	1167
48	9630	7474	5463	4519	3621	2775	1989	1273
56	11235	8721	6374	5273	4225	3238	2320	1485
63	12836	9964	7283	6024	4827	3699	2651	1697
71	14442	11210	8194	6777	5431	4162	2982	1909
79	16048	12456	9105	7531	6035	4625	3314	2121
91	18456	14326	10471	8661	6940	5319	3811	2440
103	20860	16192	11835	9789	7844	6012	4308	2757
119	24071	18684	13657	11296	9052	6937	4971	3182

All CV, RCV, PCV Radiators:
 Test Pressure: 191 psi - Max Operating Pressure: 147 psi

Distributor: QHT Inc. | 3560 Lafayette Rd | Bldg 2, Unit "A" | Portsmouth | NH | 03801

Manufacturer: Purmo Group Ltd | Bulevardi 46 | P.O. Box 115 | FI-00121 Helsinki | Finland

Purmo Group / QHT Inc both reserve the right to make changes without notice due to continuing engineering and technological advances

www.purmoUSA.com
 800-501-7697

