

2019 Radiator Guide



DESIGN, PANEL AND TOWEL BAR RADIATORS
INTELLIGENT FAN CONVECTORS
VALVES AND FITTINGS

PURMO RADIATORS vs FINNED TUBE BASEBOARD

COMFORT - Purmo Radiators deliver heat in two ways, enhancing your comfort throughout the heating season.

1. Radiant heat is delivered directly from the radiator panels to you. Think of that pleasant feeling of satisfying warmth you get by sitting around a wood stove or grandma's old cast iron steam radiator on a cold winter day.
2. Convective heat delivered by warming the air creating a low to high air flow covering your outside walls and windows creating an envelope of warmth.

Finned Tube Baseboard works by convection only delaying the warming of the room and depriving you the comforting warmth that only radiant heating can provide.

EFFICIENCY - Purmo Radiators start heating immediately after hot water begins circulating through them. This fast heat delivery shortens the run time of your boiler providing real fuel savings.

Finned Tube Baseboard with its inefficient and slow heat delivery takes longer to heat your home costing you more money for heating fuel.

SPACE - Purmo Radiators occupy only a fraction of the wall space that Finned Tube Baseboard does, giving you much more space for your interior design and furniture placement.

DURABILITY - Purmo Radiators are constructed of heavy gauge steel with a durable epoxy polyester powder coat finish strong enough to stand up to years of use and still maintain its functionality and new appearance.

Finned Tube Baseboard's thin sheet metal covers are easily damaged by vacuum cleaners, children's toys, rusting in damp environments, especially bathrooms and do not stand up to the rigors of modern family life.

DESIGN CHOICE - Purmo Radiators are available in several designs, ranging from traditional to modern, accommodating all your interior decorating creations. Finned Tube Baseboard has zero design appeal.

EASE OF CLEANING - Mounted off the floor, Purmo Radiators make vacuuming and washing floors easy allowing access to areas impossible to clean when baseboard is installed. Purmo's durable epoxy polyester resin finish is easily cleaned with non-abrasive household cleaner or a damp cloth.

Finned Tube Baseboard is very difficult clean leaving a dust laden interior and a dented and scuffed exterior as a result of bumping with a vacuum cleaner. The interior aluminum fins are razor sharp making the difficult to clean without cutting yourself.

VALUE - Purmo Radiators, when properly installed, will provide you with a lifetime of comfort and value saving you money year after year long after Finned Tube Baseboard has lost its original condition and value. Over time fin tubes cover will degrade and the fins become coated with dust lowering its ability to heat your home efficiently.

TABLE OF CONTENTS

ECOSTYLE / PURMO

Quality and reliability are what has made Ecostyle and Purmo radiators into one of the most trusted names in heating. Whether they are Ecostyle Panels or Purmo's architectural Narbonne, all are engineered and manufactured to the highest possible standards undergoing stringent anti-corrosion and finishing treatments to ensure their durability.

EXCELLENT HEAT OUTPUT

Ecostyle and Purmo radiator panels have remarkably low water content to ensure fast heat-up and high output. The low water content combined with large finned plates radiate maximum heat.

HEATING SYSTEM

Ecostyle and Purmo panels and Towel Bars are for closed loop heating systems where free access to O₂ is prevented. Incorporating thermostatically controlled radiator valves reduces system components, simplifies installation and saves energy. Panels are perfectly suited for low temperature < 140°F heat or high temperature < 180°F Heating systems.

RATINGS

The maximum water temperature is 210°F and working pressure is 147psi. All radiators are pressure tested during production.

APPLICATION ENVIROMENT

Ecostyle and Purmo panels and Towel Bars are intended for heating dry rooms. If they are installed in bathrooms, the mounting must always be on dry walls not within range or under shower or fixture.

MOUNTING

It is recommended to brace the wall or find studs where the clamp brackets provided can be mounted to ensure the wall can support the radiator.

Radiators



ECOSTYLE CV.....3,4



ECOSTYLE RCV.....5,6



ECOSTYLE PCV.....7,8



NARBONNE.....9,10



KONTEC.....11,12



ECOSTYLE TOWEL BAR RADIATORS.....13,14

Accessories

PANEL RADIATOR VALVES AND FITTINGS..... 13

RADIATOR ACCESSORIES..... 14

TOWEL BAR VALVES AND FITTINGS..... 17

PIPING SCHEMATIC WITH FITTING GUIDE..... 18

CONNECTION METHODS19

CORRECTION FACTORS 20

Intelligent Fan Convectors



VIDO 21,22,23,24

Warranty

VIDO FAN CONVECTORS.....25

ECOSTYLE/PURMO RADIATORS.....26



ECOSTYLE CV PANEL RADIATORS

The versatile Ecostyle CV panel radiators with stylish fluting and concealed convector fins provide warmth and style to your home's heating system. Ecostyle panels are equipped with six ½" female connections which allow bottom or side connections. They are also equipped with a built-in thermostatic valve body to provide individual room temperature control and clamp brackets to improve installation as well as contoured side covers and top grille.

Technical Specifications

- Material : high quality, low carbon, cold rolled DC01 steel in accordance with PN-EN 10130
- Water channel spacing: 1.3 inches
- Connections: 2 - ½" bottom and 4 - ½" side connections
- Working pressure: 147 psi
- Test Pressure: 191 psi
- Color: RAL 9016 white, other colors are available upon special request
- Package of clamp brackets packed in radiator
- Plugs, air vent, and TRV installed on radiator



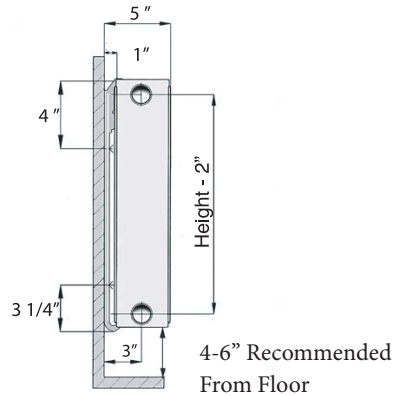
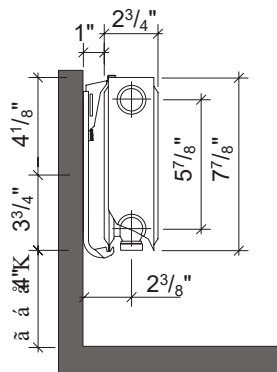
ECOSTYLE CV- DIMENSIONS AND OUTPUTS

Type 21

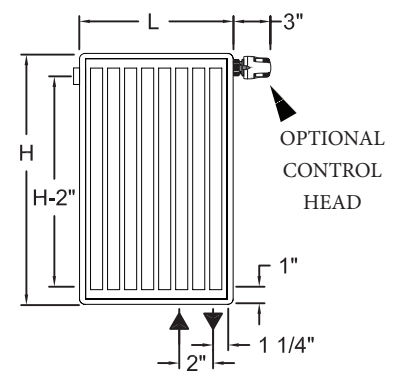
Type 22

Type 21 & 22

Side views



Front view



CV - STEEL PANEL RADIATORS

| Product Code | Height (inch) | Length (inch) | Output (BTU/HR) @ 180°F x 68°F** | Output (BTU/HR) @ 140°F x 68°F** | Weight (lbs) | Water Content (gal) | UPC # | List Price |
|--------------|---------------|---------------|----------------------------------|----------------------------------|--------------|---------------------|---------------|------------|
| ECS82421CV | 8" | 24" | 1,346 | 781 | 14 | .40 | 6418569225392 | \$101 |
| ECS83621CV | | 36" | 2,022 | 1,173 | 22 | .60 | 6418569225422 | \$142 |
| ECS84821CV | | 48" | 2,698 | 1,565 | 29 | .80 | 6418569225453 | \$184 |
| ECS85621CV | | 56" | 3,147 | 1,825 | 34 | .90 | 6418569225460 | \$226 |
| ECS87121CV | | 71" | 4,046 | 2,347 | 43 | 1.2 | 6418569225484 | \$267 |
| ECS89221CV | | 92" | 5,172 | 3,000 | 55 | 1.5 | 6418569225507 | \$308 |
| ECS812021CV | | 120" | 6,742 | 3,910 | 77 | 2.0 | 6418569225521 | \$350 |
| ECS121622CV | 12" | 16" | 1,705 | 1,031 | 15 | .37 | 5907814707499 | \$150 |
| ECS122422CV | | 24" | 2,562 | 1,548 | 22 | .53 | 5907814707512 | \$177 |
| ECS123222CV | | 32" | 3,414 | 2,064 | 29 | .71 | 5907814707536 | \$204 |
| ECS124022CV | | 40" | 4,266 | 2,579 | 37 | .90 | 5907814707550 | \$231 |
| ECS124822CV | | 48" | 5,119 | 3,094 | 44 | 1.08 | 5907814707574 | \$258 |
| ECS125622CV | | 56" | 5,971 | 3,610 | 51 | 1.27 | 5907814707598 | \$285 |
| ECS126422CV | | 64" | 6,828 | 4,128 | 58 | 1.43 | 5907814707604 | \$312 |
| ECS161622CV | 16" | 16" | 2,167 | 1,310 | 20 | .48 | 5907814712769 | \$171 |
| ECS162422CV | | 24" | 3,254 | 1,967 | 30 | .71 | 5907814712783 | \$207 |
| ECS163222CV | | 32" | 4,337 | 2,622 | 40 | .95 | 5907814712806 | \$243 |
| ECS164022CV | | 40" | 5,421 | 3,277 | 49 | 1.19 | 5907814712820 | \$279 |
| ECS164822CV | | 48" | 6,504 | 3,932 | 59 | 1.43 | 5907814712844 | \$316 |
| ECS165622CV | | 56" | 7,587 | 4,586 | 69 | 1.66 | 5907814712868 | \$352 |
| ECS166422CV | | 64" | 8,675 | 5,244 | 78 | 1.90 | 5907814712875 | \$388 |
| ECS167122CV | 20" | 71" | 9,758 | 5,899 | 88 | 2.11 | 5907814712882 | \$424 |
| ECS201622CV | | 16" | 2,610 | 1,578 | 25 | .58 | 5907814714299 | \$176 |
| ECS202422CV | | 24" | 3,916 | 2,367 | 37 | .87 | 5907814714312 | \$215 |
| ECS203222CV | | 32" | 5,221 | 3,156 | 50 | 1.14 | 5907814714336 | \$255 |
| ECS204022CV | | 40" | 6,526 | 3,945 | 62 | 1.43 | 5907814714350 | \$294 |
| ECS204822CV | | 48" | 7,831 | 4,734 | 74 | 1.72 | 5907814714374 | \$333 |
| ECS205622CV | | 56" | 9,137 | 5,523 | 86 | 2.01 | 5907814714398 | \$373 |
| ECS206422CV | 24" | 64" | 10,442 | 6,312 | 98 | 2.30 | 5907814714404 | \$412 |
| ECS241622CV | | 16" | 3,037 | 1,836 | 30 | .69 | 5907814707833 | \$181 |
| ECS242422CV | | 24" | 4,551 | 2,751 | 45 | 1.06 | 5907814707857 | \$225 |
| ECS243222CV | | 32" | 6,069 | 3,669 | 60 | 1.40 | 5907814707871 | \$264 |
| ECS244022CV | | 40" | 7,587 | 4,586 | 74 | 1.74 | 5907814707895 | \$305 |
| ECS244822CV | | 48" | 9,106 | 5,504 | 89 | 2.09 | 5907814707918 | \$347 |
| ECS245622CV | | 56" | 10,624 | 6,422 | 104 | 2.43 | 5907814707932 | \$388 |
| ECS246422CV | 36" | 64" | 12,138 | 7,337 | 118 | 2.80 | 5907814707949 | \$430 |
| ECS247122CV | | 71" | 13,656 | 8,255 | 133 | 3.14 | 5907814707956 | \$471 |
| ECS361622CV | | 16" | 4,240 | 2,563 | 46 | .95 | 5907814708007 | \$223 |
| ECS362422CV | | 24" | 6,362 | 3,846 | 68 | 1.43 | 5907814708021 | \$284 |
| ECS363222CV | | 32" | 8,480 | 5,126 | 90 | 1.90 | 5907814708045 | \$345 |
| ECS364022CV | | 40" | 10,602 | 6,409 | 112 | 2.38 | 5907814708069 | \$406 |
| ECS364822CV | | 48" | 12,724 | 7,691 | 135 | 2.85 | 5907814708083 | \$467 |

Outputs based on supply temperatures shown, 20° F ΔT and 68° F Room Temperature



ECOSTYLE RCV PANEL RADIATORS

The RCV designer radiators bring an upscale look with horizontal ribbed profile. They provide increased warmth, efficiency and style blending in with traditional and modern decor. RCV panels are equipped with six ½" female connections which allow bottom and side connections. And are also equipped with a built-in thermostatic valve body to provide individual room temperature control and clamp brackets to ease installation as well as contoured side covers and top grille.

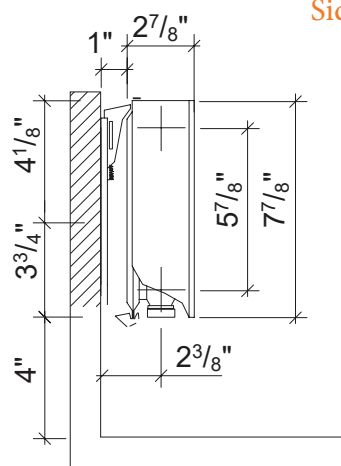
Technical Specifications

- Material : high quality, low carbon, cold rolled DC01 steel in accordance with PN-EN 10130
- Water channel spacing: 1.3 inches
- Connections and 4 – ½" side connections, 2- ½" bottom connections
- Working pressure: 147 PSI
- Test Pressure: 191 psi
- Color: RAL 9016 white, other colors are available upon special request
- Package of clamp brackets packed in radiator
- Plugs, air vent, and TRV installed on radiator



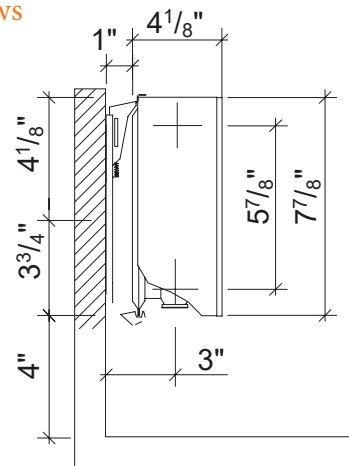
RCV- DIMENSIONS AND OUTPUTS

Type 21



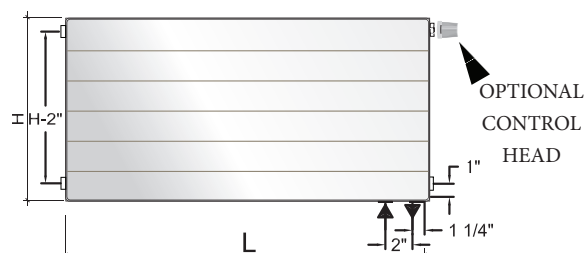
Type 22

Side views



Type 21 & 22

Front view



Horizontal Panels Type 21 and Type 22
6 Pipe Connection Panels (1/2")

| RCV- STEEL PANEL RADIATORS | | | | | | | | |
|----------------------------|---------------|---------------|-------------------------------------|-------------------------------------|--------------|---------------------|---------------|------------|
| Product Code | Height (inch) | Length (inch) | Output (BTU/HR) @ 180°F x 68°F** | Output (BTU/HR) @ 140°F x 68°F** | Weight (lbs) | Water Content (gal) | UPC # | List Price |
| RCV082421 | 8" | 24" | 1,346 | 781 | 17 | .40 | 6418569240289 | \$230 |
| RCV083621 | | 36" | 2,022 | 1,173 | 27 | .60 | 6438149906435 | \$255 |
| RCV084821 | | 48" | 2,698 | 1,565 | 35 | .80 | 6418569240463 | \$299 |
| RCV085621 | | 56" | 3,147 | 1,825 | 41 | .90 | 6438149906503 | \$315 |
| RCV087121 | | 71" | 4,046 | 2,347 | 52 | 1.2 | 6418569240555 | \$387 |
| RCV089221 | | 92" | 5,172 | 3,000 | 67 | 1.5 | 6438149906558 | \$465 |
| RCV0812021 | | 120" | 6,742 | 3,910 | 94 | 2.0 | 6438149906596 | \$591 |
| RCV121622 | 12" | 16" | 1,705 | 1,031 | 18 | .37 | 5900801009101 | \$310 |
| RCV122422 | | 24" | 2,562 | 1,548 | 27 | .53 | 5900801009149 | \$330 |
| RCV123222 | | 32" | 3,414 | 2,064 | 35 | .71 | 5900801009163 | \$370 |
| RCV124022 | | 40" | 4,266 | 2,579 | 45 | .90 | 5900801009187 | \$400 |
| RCV124822 | | 48" | 5,119 | 3,094 | 54 | 1.08 | 5900801009200 | \$435 |
| RCV125622 | | 56" | 5,971 | 3,610 | 62 | 1.27 | 5900801009224 | \$465 |
| RCV126422 | 16" | 64" | 6,828 | 4,128 | 71 | 1.43 | 5900801009248 | \$500 |
| RCV161622 | | 16" | 2,167 | 1,310 | 24 | .48 | 5900801009361 | \$330 |
| RCV162422 | | 24" | 3,254 | 1,967 | 37 | .71 | 5900801009408 | \$355 |
| RCV163222 | | 32" | 4,337 | 2,622 | 49 | .95 | 5900801009422 | \$395 |
| RCV164022 | | 40" | 5,421 | 3,277 | 60 | 1.19 | 5900801009446 | \$430 |
| RCV164822 | | 48" | 6,504 | 3,932 | 72 | 1.43 | 5900801009460 | \$475 |
| RCV165622 | 20" | 56" | 7,587 | 4,586 | 84 | 1.66 | 5900801009484 | \$534 |
| RCV166422 | | 64" | 8,675 | 5,244 | 95 | 1.90 | 5900801009507 | \$574 |
| RCV167122 | | 71" | 9,758 | 5,899 | 107 | 2.11 | 5900801009521 | \$619 |
| RCV201622 | | 16" | 2,610 | 1,578 | 30 | .58 | 5900801009620 | \$357 |
| RCV202422 | | 24" | 3,916 | 2,367 | 45 | .87 | 5900801009668 | \$387 |
| RCV203222 | | 32" | 5,221 | 3,156 | 61 | 1.14 | 5900801009682 | \$421 |
| RCV204022 | 24" | 40" | 6,526 | 3,945 | 76 | 1.43 | 5900801009705 | \$451 |
| RCV204822 | | 48" | 7,831 | 4,734 | 90 | 1.72 | 5900801009729 | \$484 |
| RCV205622 | | 56" | 9,137 | 5,523 | 105 | 2.01 | 5900801009743 | \$520 |
| RCV206422 | | 64" | 10,442 | 6,312 | 120 | 2.30 | 5900801009767 | \$556 |
| RCV241622 | | 16" | 3,037 | 1,836 | 37 | .69 | 5900801009880 | \$365 |
| RCV242422 | | 24" | 4,551 | 2,751 | 55 | 1.06 | 5900801009927 | \$400 |
| RCV243222 | 36" | 32" | 6,069 | 3,669 | 73 | 1.40 | 5900801009941 | \$440 |
| RCV244022 | | 40" | 7,587 | 4,586 | 90 | 1.74 | 5900801009965 | \$480 |
| RCV244822 | | 48" | 9,106 | 5,504 | 109 | 2.09 | 5900801009989 | \$554 |
| RCV245622 | | 56" | 10,624 | 6,422 | 127 | 2.43 | 5900801010008 | \$644 |
| RCV246422 | | 64" | 12,138 | 7,337 | 144 | 2.80 | 5900801010022 | \$704 |
| RCV247122 | | 71" | 13,656 | 8,255 | 162 | 3.14 | 5900801010046 | \$775 |
| RCV361622 | 36" | 16" | 4,240 | 2,563 | 56 | .95 | 5900801010145 | \$440 |
| RCV362422 | | 24" | 6,362 | 3,846 | 83 | 1.43 | 5900801010183 | \$490 |
| RCV363222 | | 32" | 8,480 | 5,126 | 110 | 1.90 | 5900801010206 | \$590 |
| RCV364022 | | 40" | 10,602 | 6,409 | 137 | 2.38 | 5900801010220 | \$674 |
| RCV364822 | | 48" | 12,724 | 7,691 | 165 | 2.85 | 5900801010244 | \$760 |



ECOSTYLE PCV PANEL RADIATORS

The PCV radiators stand out due to their smooth flat faced panel. They provide increased warmth, efficiency and style blending in with traditional and modern decor. PCV panels are equipped with six ½" female connections which allow bottom and side connections. And are also equipped with a built-in thermostatic valve body to provide individual room temperature control and clamp brackets to ease installation as well as contoured side covers and top grille.

Technical Specifications

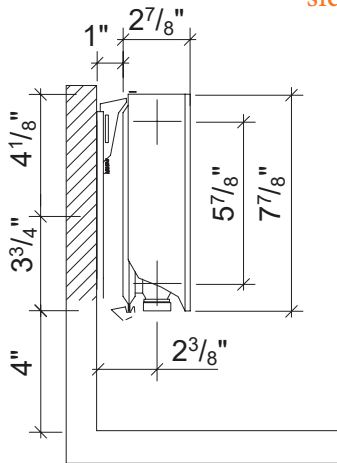
- Material : high quality, low carbon, cold rolled DC01 steel in accordance with PN-EN 10130
- Water channel spacing: 1.3 inches
- Connections and 4 – ½" side connections, 2- ½" bottom connections
- Working pressure: 147 PSI
- Test Pressure: 191 psi
- Color: RAL 9016 white, other colors are available upon special request
- Package of clamp brackets packed in radiator
- Plugs, air vent, and TRV installed on radiator



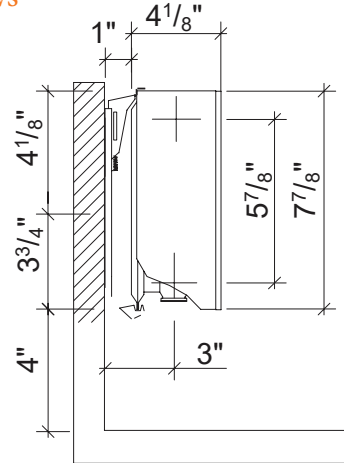
PCV- DIMENSIONS AND OUTPUTS

Type 21

side views

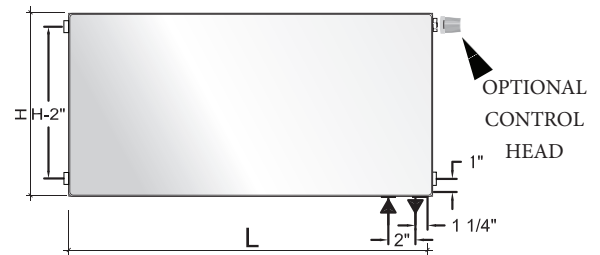


Type 22



Type 21 & 22

Front view



Horizontal Panels Type 21 and Type 22
6 Pipe Connection Panels (1/2")

| PCV - STEEL PANEL RADIATORS | | | | | | | | |
|-----------------------------|---------------|---------------|----------------------------------|----------------------------------|--------------|---------------------|---------------|------------|
| Product Code | Height (inch) | Length (inch) | Output (BTU/HR) @ 180°F x 68°F** | Output (BTU/HR) @ 140°F x 68°F** | Weight (lbs) | Water Content (gal) | UPC # | List Price |
| PCV082421 | 8" | 24" | 1,346 | 781 | 17 | .40 | 6418569240289 | \$230 |
| PCV083621 | | 36" | 2,022 | 1,173 | 27 | .60 | 6438149906435 | \$255 |
| PCV084821 | | 48" | 2,698 | 1,565 | 35 | .80 | 6418569240463 | \$299 |
| PCV085621 | | 56" | 3,147 | 1,825 | 41 | .90 | 6438149906503 | \$315 |
| PCV087121 | | 71" | 4,046 | 2,347 | 52 | 1.2 | 6418569240555 | \$387 |
| PCV089221 | | 92" | 5,172 | 3,000 | 67 | 1.5 | 6438149906558 | \$465 |
| PCV0812021 | | 120" | 6,742 | 3,910 | 94 | 2.0 | 6438149906596 | \$591 |
| PCV121622 | 12" | 16" | 1,705 | 1,031 | 18 | .37 | 5900801009101 | \$310 |
| PCV122422 | | 24" | 2,562 | 1,548 | 27 | .53 | 5900801009149 | \$330 |
| PCV123222 | | 32" | 3,414 | 2,064 | 35 | .71 | 5900801009163 | \$370 |
| PCV124022 | | 40" | 4,266 | 2,579 | 45 | .90 | 5900801009187 | \$400 |
| PCV124822 | | 48" | 5,119 | 3,094 | 54 | 1.08 | 5900801009200 | \$435 |
| PCV125622 | | 56" | 5,971 | 3,610 | 62 | 1.27 | 5900801009224 | \$465 |
| PCV126422 | | 64" | 6,828 | 4,128 | 71 | 1.43 | 5900801009248 | \$500 |
| PCV161622 | 16" | 16" | 2,167 | 1,310 | 24 | .48 | 5900801009361 | \$330 |
| PCV162422 | | 24" | 3,254 | 1,967 | 37 | .71 | 5900801009408 | \$355 |
| PCV163222 | | 32" | 4,337 | 2,622 | 49 | .95 | 5900801009422 | \$395 |
| PCV164022 | | 40" | 5,421 | 3,277 | 60 | 1.19 | 5900801009446 | \$430 |
| PCV164822 | | 48" | 6,504 | 3,932 | 72 | 1.43 | 5900801009460 | \$475 |
| PCV165622 | | 56" | 7,587 | 4,586 | 84 | 1.66 | 5900801009484 | \$534 |
| PCV166422 | | 64" | 8,675 | 5,244 | 95 | 1.90 | 5900801009507 | \$574 |
| PCV167122 | | 71" | 9,758 | 5,899 | 107 | 2.11 | 5900801009521 | \$619 |
| PCV201622 | 20" | 16" | 2,610 | 1,578 | 30 | .58 | 5900801009620 | \$357 |
| PCV202422 | | 24" | 3,916 | 2,367 | 45 | .87 | 5900801009668 | \$387 |
| PCV203222 | | 32" | 5,221 | 3,156 | 61 | 1.14 | 5900801009682 | \$421 |
| PCV204022 | | 40" | 6,526 | 3,945 | 76 | 1.43 | 5900801009705 | \$451 |
| PCV204822 | | 48" | 7,831 | 4,734 | 90 | 1.72 | 5900801009729 | \$484 |
| PCV205622 | | 56" | 9,137 | 5,523 | 105 | 2.01 | 5900801009743 | \$520 |
| PCV206422 | | 64" | 10,442 | 6,312 | 120 | 2.30 | 5900801009767 | \$556 |
| PCV241622 | 24" | 16" | 3,037 | 1,836 | 37 | .69 | 5900801009880 | \$365 |
| PCV242422 | | 24" | 4,551 | 2,751 | 55 | 1.06 | 5900801009927 | \$400 |
| PCV243222 | | 32" | 6,069 | 3,669 | 73 | 1.40 | 5900801009941 | \$440 |
| PCV244022 | | 40" | 7,587 | 4,586 | 90 | 1.74 | 5900801009965 | \$480 |
| PCV244822 | | 48" | 9,106 | 5,504 | 109 | 2.09 | 5900801009989 | \$554 |
| PCV245622 | | 56" | 10,624 | 6,422 | 127 | 2.43 | 5900801010008 | \$644 |
| PCV246422 | | 64" | 12,138 | 7,337 | 144 | 2.80 | 5900801010022 | \$704 |
| PCV247122 | | 71" | 13,656 | 8,255 | 162 | 3.14 | 5900801010046 | \$775 |
| PCV361622 | 36" | 16" | 4,240 | 2,563 | 56 | .95 | 5900801010145 | \$440 |
| PCV362422 | | 24" | 6,362 | 3,846 | 83 | 1.43 | 5900801010183 | \$490 |
| PCV363222 | | 32" | 8,480 | 5,126 | 110 | 1.90 | 5900801010206 | \$590 |
| PCV364022 | | 40" | 10,602 | 6,409 | 137 | 2.38 | 5900801010220 | \$674 |
| PCV364822 | | 48" | 12,724 | 7,691 | 165 | 2.85 | 5900801010244 | \$760 |

Outputs based on supply temperatures shown, 20° F ΔT and 68° F Room Temperature



NARBONNE TUBE RADIATORS

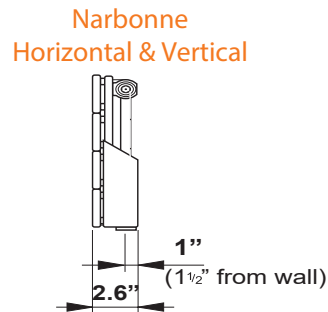
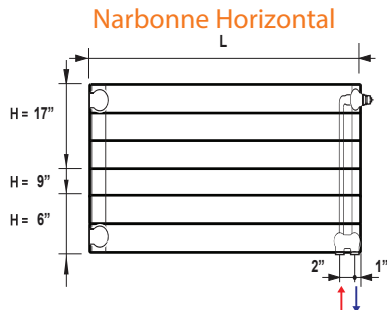
The architectural Narbonne radiator is unsurpassed in providing warmth, style and efficiency to your living space. Its horizontal or vertical arrays of flattened bars with convector fins welded to the back of the radiator bars increase the heat transfer to the room space. For a simple, elegant look with high outputs to match, the sleek, smooth Narbonne will complement interiors from traditional décor to ultra-modern with an abundant selection of sizes, colors and heat outputs.

Technical Specifications

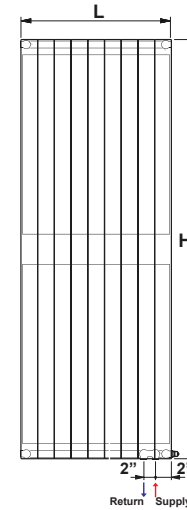
- Material : high quality, low carbon, cold rolled DC01 steel in accordance with PN-EN 10130
- Connections: 3-1/2" side connections 2-1/2" conical bottom connections
- Working pressure: 72 PSI, or 116 PSI with special order
- Test Pressure: 150 PSI
- Color: RAL 9016 white, other colors are available upon special request
- Accessories: Installation brackets, plugs and air vent.



NARBONNE-DIMENSIONS AND OUTPUTS



Rough In Dimensions Narbonne Vertical



Vertical Panels

4 - 1/2" Side Pipe Connection Panels

2 - 3/4" Bottom Pipe Connection Panels

| Radiator Model | Type | Tubes | Height (in) | Length (in) | Output (BTU/HR) @ 180°F | Output (BTU/HR) @ 140°F | Weight (lbs) | Water Content (gal) | List |
|----------------|------|-------|-------------|-------------|-------------------------|-------------------------|--------------|---------------------|------------|
| NV11 7914 | 11 | 5 | 79 | 14 | 3,865 | 2,163 | 59 | 1.32 | \$869.94 |
| NV11 7917 | | 6 | | 17 | 4,646 | 2,600 | 70 | 1.54 | \$915.74 |
| NV11 7923 | | 7 | | 23 | 5,421 | 3,034 | 80 | 1.77 | \$1,016.51 |
| NV11 7929 | | 8 | | 29 | 6,202 | 3,471 | 90 | 2.00 | \$1,199.65 |

Horizontal Panels

4 - 1/2" Side Pipe Connection Panels

2 - 3/4" Bottom Pipe Connection Panels

| Radiator Model | Type | Tubes | Height (in) | Length (in) | Output (BTU/HR) @ 180°F | Output (BTU/HR) @ 140°F | Weight (lbs) | Water Content (gal) | List |
|----------------|------|-------|-------------|-------------|-------------------------|-------------------------|--------------|---------------------|------------|
| NH11 0624 | 11 | 2 | 6 | 24 | 1,254 | 702 | 11 | 0.18 | \$416.67 |
| NH11 0636 | | | | 36 | 1,881 | 1,055 | 16 | 0.27 | \$435.90 |
| NH11 0648 | | | | 48 | 2,508 | 1,404 | 21 | 0.36 | \$458.33 |
| NH11 0663 | | | | 63 | 3,150 | 1,843 | 28 | 0.47 | \$483.97 |
| NH11 0671 | | | | 71 | 3,762 | 2,077 | 31 | 0.53 | \$538.46 |
| NH11 0687 | | | | 87 | 4,423 | 2,545 | 38 | 0.65 | \$560.90 |
| NH11 0695 | | | | 95 | 5,016 | 2,780 | 42 | 0.72 | \$634.62 |
| NH11 06119 | | | | 119 | 6,270 | 3,510 | 54 | 1.00 | \$759.62 |
| NH11 0924 | 11 | 3 | 9 | 24 | 1,518 | 849 | 15 | 0.26 | \$439.10 |
| NH11 0936 | | | | 36 | 2,282 | 1,277 | 22 | 0.39 | \$464.74 |
| NH11 0948 | | | | 48 | 3,041 | 1,702 | 30 | 0.52 | \$490.38 |
| NH11 0963 | | | | 63 | 4,051 | 2,267 | 39 | 0.69 | \$522.44 |
| NH11 0971 | | | | 71 | 4,558 | 2,551 | 44 | 0.78 | \$573.72 |
| NH11 0995 | | | | 95 | 6,082 | 3,404 | 59 | 1.05 | \$705.13 |
| NH11 9119 | | | | 119 | 7,599 | 4,253 | 61 | 1.57 | \$823.72 |
| NH11 1724 | 11 | 6 | 17 | 24 | 2,476 | 1,386 | 30 | 0.52 | \$625.00 |
| NH11 1736 | | | | 36 | 3,715 | 2,079 | 44 | 0.78 | \$733.97 |
| NH11 1748 | | | | 48 | 4,951 | 2,771 | 59 | 1.05 | \$887.82 |
| NH11 1763 | | | | 63 | 6,603 | 3,696 | 74 | 1.31 | \$1,032.05 |
| NH11 1771 | | | | 71 | 7,430 | 4,159 | 89 | 1.57 | \$1,121.79 |
| NH11 1795 | | | | 95 | 9,906 | 5,544 | 118 | 2.09 | \$1,288.46 |

KONTEC TUBE RADIATORS



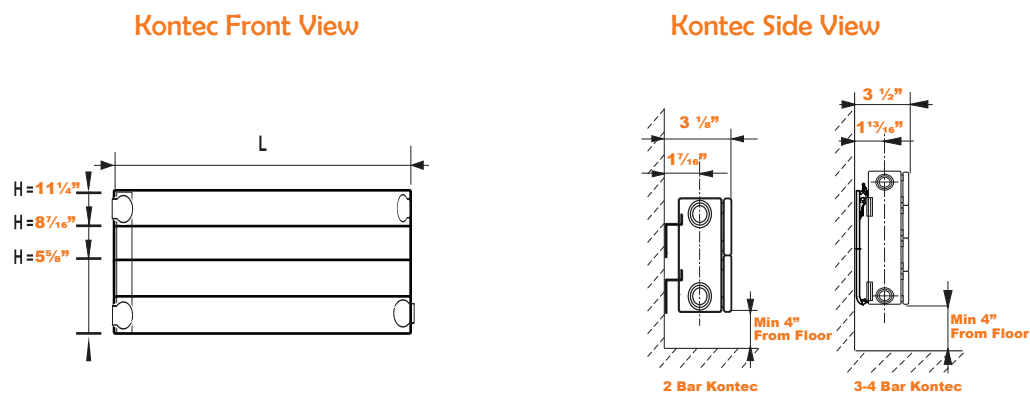
The “Kontec” architectural, flat tube, radiators are ideal for providing warmth, style and efficiency to your living space. With their horizontal arrays of flattened tubes, Kontec radiators will supply comfortable heat at low flow temperatures eliminating drafts and cold spots. Convactor fins welded to the tubes on the back of the radiator help increase heat transfer from the boiler water to the room space. Kontec panels are available in a variety of sizes to fit almost any requirement.

Technical Specifications

- Material : high quality, low carbon, cold rolled DC01 steel in accordance with PN-EN 10130
- Connections: 4-1/2” side connections
- Working pressure: 72 PSI, 116 PSI with special order
- Test Pressure: 150 PSI
- Color: RAL 9016 white, other colors are available upon special request
- Accessories: Installation brackets, plugs and air vent.



KONTEC-DIMENSIONS AND OUTPUTS



Horizontal Panels

All Kontec Radiators Have 4 - 1/2" Side Connections

| Radiator Model | Type | Tubes | Height (in) | Length (in) | Output (BTU/HR) @ 180°F | Output (BTU/HR) @ 140°F | Weight (lbs) | Water Content (gal) | List |
|----------------|------|-------|-------------|-------------|-------------------------|-------------------------|--------------|---------------------|-------|
| KK062411 | 11 | 2 | 6 | 24 | 1,254 | 702 | 11 | 0.18 | \$353 |
| KK063611 | | | | 36 | 1,881 | 1,055 | 16 | 0.27 | \$358 |
| KK064811 | | | | 48 | 2,508 | 1,404 | 21 | 0.36 | \$376 |
| KK066311 | | | | 63 | 3,150 | 1,843 | 28 | 0.47 | \$396 |
| KK067111 | | | | 71 | 3,762 | 2,077 | 31 | 0.53 | \$440 |
| KK068711 | | | | 87 | 4,423 | 2,545 | 38 | 0.65 | \$461 |
| KK069511 | | | | 95 | 5,016 | 2,780 | 42 | 0.72 | \$520 |
| KK0611911 | | | | 119 | 6,270 | 3,510 | 54 | 1.00 | \$626 |
| KK092411 | 11 | 3 | 9 | 24 | 1,518 | 849 | 15 | 0.26 | \$361 |
| KK093611 | | | | 36 | 2,282 | 1,277 | 22 | 0.39 | \$382 |
| KK094811 | | | | 48 | 3,041 | 1,702 | 30 | 0.52 | \$404 |
| KK096311 | | | | 63 | 4,051 | 2,267 | 39 | 0.69 | \$449 |
| KK097111 | | | | 71 | 4,558 | 2,551 | 44 | 0.78 | \$473 |
| KK099511 | | | | 95 | 6,082 | 3,404 | 59 | 1.05 | \$579 |
| KK0911911 | | | | 119 | 7,599 | 4,253 | 61 | 1.57 | \$706 |
| KK122411 | 11 | 4 | 12 | 24 | 2,476 | 1,386 | 24 | 0.52 | \$391 |
| KK123611 | | | | 36 | 3,715 | 2,079 | 36 | 0.78 | \$429 |
| KK124811 | | | | 48 | 4,951 | 2,771 | 59 | 1.05 | \$467 |
| KK126311 | | | | 63 | 6,603 | 3,696 | 74 | 1.31 | \$537 |
| KK127111 | | | | 71 | 7,430 | 4,159 | 89 | 1.57 | \$574 |
| KK129511 | | | | 95 | 9,906 | 5,544 | 118 | 2.09 | \$674 |

RADIATOR VALVES AND FITTINGS

Radiator Fittings



RV-NA10534

Universal PEX Fittings
Compatible with any ASTM F876 single layer PEX.
Max. working pressure: 150 psi.
Working temperature: 41-180°F.
Chrome plated nut.



RV-NA10535

Sweat and Compression fittings fit 1/2" copper.
Max. working pressure: 150 psi.
Working temperature: 41-250°F.
Chrome plated nut.

ALL FITTINGS COME WITH CONICAL RADIATOR ADAPTER

| PART # | DESCRIPTION | LIST |
|------------|-------------------------|-----------|
| RV-NA10536 | 3/8" Nominal PEX | \$33/Pair |
| RV-NA10534 | 1/2" Nominal PEX | \$33/Pair |
| RV-NA10537 | 5/8" Nominal PEX | \$33/Pair |
| RV-NA10535 | 1/2" Copper Sweat | \$37/Pair |
| RV-NA10555 | 1/2" Copper Compression | \$33/Pair |

Radiator Valves For Bottom Connections

(ONLY WORKS WITH ECOSTYLE CV, PCV AND SOME NARBONNE WITH BOTTOM CONNECTIONS)



RV-NA10530



RV-NA10532



RV-NA10531



RV-NA10533

Valves for panel radiators that have built-in thermostatic valve unit. Available in two-pipe straight and angled versions. These Valves fit 1/2" female radiator adapters supplied with fittings. Diverter valves allow a by-pass of 30 to 50%. Factory set for 35%.

Max. working pressure: 150 psi.

Max. working temperature: 212°F.

| PART # | DESCRIPTION | LIST |
|------------|-------------------------|------|
| RV-NA10530 | 1/2" Straight Isolation | \$34 |
| RV-NA10531 | 1/2" Angled Isolation | \$34 |
| RV-NA10532 | 1/2" Straight Diverter | \$61 |
| RV-NA10533 | 1/2" Angled Diverter | \$61 |

Radiator Valves For Side Connections

(WORKS WITH ALL RADIATORS)



RV-338452



RV-342452



RV-339452



RV-343452

Angled and Straight radiator valves. Thermostatic versions allow use of a Non-Electric actuator for room temperature control.

Chrome plated.

Max. working pressure: 150 psi.

Temperature range: 40-212°F.

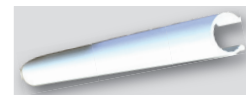
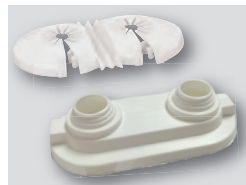
| PART # | DESCRIPTION | LIST |
|-----------|----------------------------|------|
| RV-338452 | 1/2" Angled Thermostatic | \$57 |
| RV-339452 | 1/2" Straight Thermostatic | \$57 |
| RV-342452 | 1/2" Angled Shutoff | \$31 |
| RV-343452 | 1/2" Straight Shutoff | \$31 |

Radiator Accessories



Thermostatic control head fits radiator valves. Set point locking mechanism. Range stop adjustment. Built-in sensor with liquid-filled element. Fits valve 220, 221, 338 and 339 series. Graduated scale from * to 5 corresponding to a temperature scale adjustment range of 45-82°F (7-28°C).

| PART # | DESCRIPTION | LIST |
|-----------|-----------------------|------|
| RV-200000 | Non Electric Actuator | \$56 |

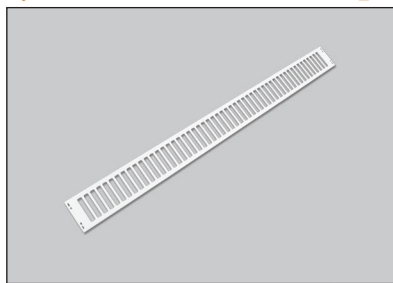


Fits dual panel radiator valves 301 in white ABS. Outlet center distance: 2" on center.

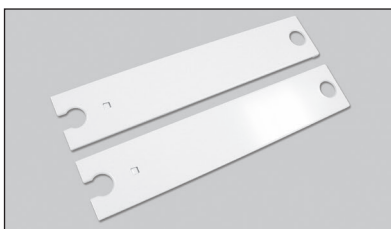
| PART # | DESCRIPTION | LIST |
|-------------|-------------------------|------|
| RV-449740 | 2 Pipe Flex Escutcheon | \$8 |
| RV-12550 | 2 Pipe Rigid Escutcheon | \$9 |
| RV-8W SNAP | 8" Snap On Pipe Cover | \$7 |
| RV-39W SNAP | 39" Snap On Pipe Cover | \$19 |

RADIATOR ACCESSORIES

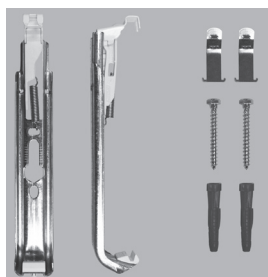
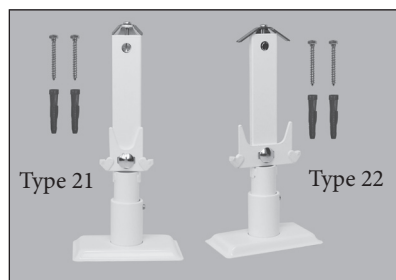
Ecostyle CV, RCV, PCV Spare Parts



| PART # | DESCRIPTION | LIST |
|----------|--|------|
| B-16 TG | Top Grill For 16" Ecostyle CV, RCV, PCV Type 22 | \$8 |
| B-24 TG | Top Grill For 24" Ecostyle CV, RCV, PCV Type 22 | \$10 |
| B-24 TG8 | Top Grill For 24" Ecostyle CV, RCV, PCV Type 21 | \$10 |
| B-32 TG | Top Grill For 32" Ecostyle CV, RCV, PCV Type 22 | \$12 |
| B-36 TG8 | Top Grill For 36" Ecostyle CV, RCV, PCV Type 21 | \$12 |
| B-40 TG | Top Grill For 40" Ecostyle CV, RCV, PCV Type 22 | \$14 |
| B-48 TG | Top Grill For 48" Ecostyle CV, RCV, PCV Type 22 | \$17 |
| B-48 TG8 | Top Grill For 48" Ecostyle CV, RCV, PCV Type 21 | \$17 |
| B-56 TG | Top Grill For 56" Ecostyle CV, RCV, PCV Type 22 | \$22 |
| B-56 TG8 | Top Grill For 56" Ecostyle CV, RCV, PCV Type 21 | \$22 |
| B-64 TG | Top Grill For 64" Ecostyle CV, RCV, PCV Type 22 | \$24 |
| B-71 TG | Top Grill For 71" Ecostyle CV, RCV, PCV Type 22 | \$31 |
| B-72 TG8 | Top Grill For 72" Ecostyle CV, RCV, PCV Type 21 | \$31 |
| B-92 TG8 | Top Grill For 92" Ecostyle CV, RCV, PCV Type 21 | \$35 |
| B-120TG8 | Top Grill For 120" Ecostyle CV, RCV, PCV Type 21 | \$38 |



| PART # | DESCRIPTION | LIST |
|---------|--|------|
| B-8 SP | Side Panel For 8" Ecostyle CV, RCV, PCV Type 21 | \$8 |
| B-12 SP | Side Panel For 12" Ecostyle CV, RCV, PCV Type 22 | \$10 |
| B-16 SP | Side Panel For 16" Ecostyle CV, RCV, PCV Type 22 | \$10 |
| B-20 SP | Side Panel For 20" Ecostyle CV, RCV, PCV Type 22 | \$12 |
| B-24 SP | Side Panel For 24" Ecostyle CV, RCV, PCV Type 22 | \$12 |
| B-36 SP | Side Panel For 36" Ecostyle CV, RCV, PCV Type 22 | \$14 |



Works with 8, 12, 16, 20, 24" height radiators. Radiator floor mounting bracket. In white. Bolt down design, with plastic cover to hide plate and screws.

| PART # | DESCRIPTION | LIST |
|-------------|----------------------------------|---------|
| ECS-FLRBRKT | FLOOR BRACKET FITS TYPE 11,21,22 | \$70/Ea |
| ECS8CLAMP | Radiator Wall Bracket Type 21 | \$15/Ea |
| ECS12CLAMP | Radiator Wall Bracket Type 22 | \$13/Ea |
| ECS16CLAMP | Radiator Wall Bracket Type 22 | \$17/Ea |
| ECS20CLAMP | Radiator Wall Bracket Type 22 | \$20/Ea |
| ECS24CLAMP | Radiator Wall Bracket Type 22 | \$23/Ea |
| ECS36CLAMP | Radiator Wall Bracket Type 22 | \$25/Ea |

Narbonne Spare Parts

COMING SOON

| PART # | DESCRIPTION | LIST |
|------------|--|------|
| NH1124 TG | Top Grill For 24" Narbonne Type 11 | \$ |
| NH1136 TG | Top Grill For 36" Narbonne Type 11 | \$ |
| NH1148 TG | Top Grill For 48" Narbonne Type 11 | \$ |
| NH1163 TG | Top Grill For 63" Narbonne Type 11 | \$ |
| NH1171 TG | Top Grill For 71" Narbonne Type 11 | \$ |
| NH1187 TG | Top Grill For 87" Narbonne Type 11 | \$ |
| NH1195 TG | Top Grill For 95" Narbonne Type 11 | \$ |
| NH11119 TG | Top Grill For 119" Narbonne Type 11 | \$ |
| NV1114 TG | Top Grill For 14" Wide Vertical Narbonne Type 11 | \$ |
| NV1117 TG | Top Grill For 17" Wide Vertical Narbonne Type 11 | \$ |
| NV1123 TG | Top Grill For 14" Wide Vertical Narbonne Type 11 | \$ |
| NV1129 TG | Top Grill For 14" Wide Vertical Narbonne Type 11 | \$ |

COMING SOON

| PART # | DESCRIPTION | LIST |
|-----------|-------------------------------------|------|
| NH1106 SP | Side Panel For 06" Narbonne Type 11 | \$ |
| NH1109 SP | Side Panel For 09" Narbonne Type 11 | \$ |
| NH1117 SP | Side Panel For 17" Narbonne Type 11 | \$ |
| NV1179 SP | Side Panel For 79" Narbonne Type 11 | \$ |



COMING SOON

| PART # | DESCRIPTION | LIST |
|--------|---------------------------------------|------|
| | Narbonne 2 Tube (Left) End Cap | \$ |
| | Narbonne 2 Tube (Right) End Cap | \$ |
| | Narbonne 2 Tube Inside Corner Joiner | \$ |
| | Narbonne 2 Tube Outside Corner Joiner | \$ |
| | Narbonne 2 Tube Center Joiner | \$ |



COMING SOON

| PART # | DESCRIPTION | LIST |
|--------|---|------|
| | Towel Rail for Narbonne Vertical 5 Tube | \$ |
| | Towel Rail for Narbonne Vertical 6 Tube | \$ |
| | Towel Rail for Narbonne Vertical 7 Tube | \$ |
| | Towel Rail for Narbonne Vertical 8 Tube | \$ |



ECOSTYLE TOWEL BARS

Bringing together premium quality and efficiency with designer looks, the Ecostyle Towel Bars are tubular radiators that have been used in Europe to heat towels as well as whole bathrooms, kitchens, and hallways, without wasting valuable wall space. These towel bars provide comfort and elegance to all types of interiors.

Available in both straight or curved bar design, they can be ordered in white or chrome with outputs ranging from 1,346 BTU/HR to 3,967 BTU/HR. Their compact profile being 24 inches wide and either 33, 48, 59 or 70 inches tall enables them to fit in tight spots

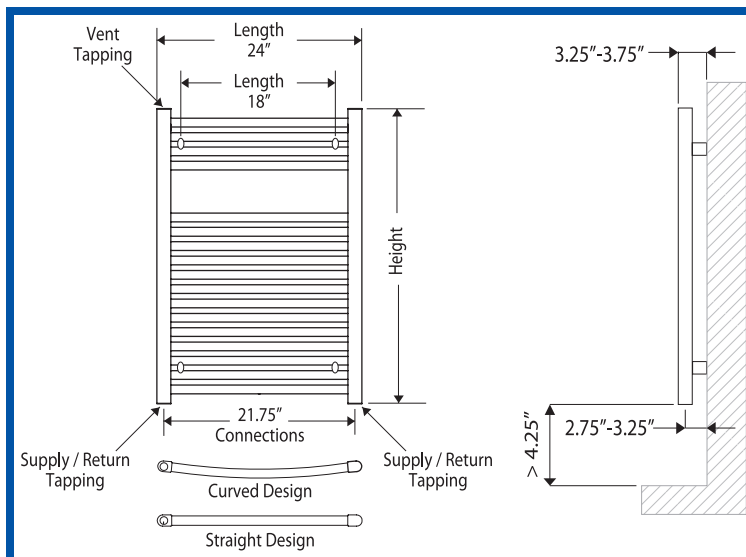
Ecostyle Towel Bars have two ½” bottom connections, a top air vent connection and are available with non-electric thermostatic heads and valve sets.

Technical Specifications

- Materials: high quality, low carbon, cold rolled DC01 steel in accordance with PN-EN 10130
- Water column spacing: 1 ½” inches
- Connections: 2 - ½” bottom connections, 1 - ½” top connection (for air vent)
- Working pressure: 116 psi
- Color: RAL 9016 white, other colors are available upon special request
- Accessories: package of lug brackets, plugs, and air vent



ECOSTYLE TOWEL BARS- DIMENSIONS AND OUTPUTS

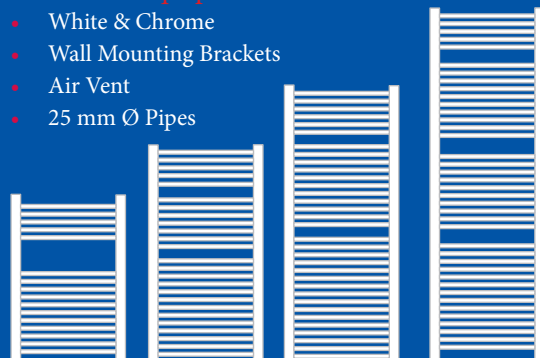


Optional Equipment

- Valve Kits (White & Chrome)
- Electric Elements

Standard Equipment

- White & Chrome
- Wall Mounting Brackets
- Air Vent
- 25 mm Ø Pipes



Ecostyle Towel Bars 3-1/2" Pipe Connection

| WHITE Straight Towel Bar Radiators | | | | | LIST |
|------------------------------------|-------------|-------------------------|-------------------------|--------------------------|-------|
| Radiator Model | Height (in) | Output (BTU/HR) @ 180°F | Output (BTU/HR) @ 140°F | Output Electric (BTU/HR) | |
| B-33.24SW | 33 | 1,972 | 1,056 | 1,364 | \$186 |
| B-48.24SW | 48 | 2,881 | 1,519 | 2,046 | \$237 |
| B-59.24SW | 59 | 3,463 | 1,831 | 2,728 | \$255 |
| B-70.24SW | 70 | 3,967 | 2,103 | 3,072 | \$302 |

Note: Outputs based on supply water temperature shown, 20°F ΔT and 68°F Room Temperature.

| CHROME Straight Towel Bar Radiators | | | | | LIST |
|-------------------------------------|-------------|-------------------------|-------------------------|--------------------------|-------|
| Radiator Model | Height (in) | Output (BTU/HR) @ 180°F | Output (BTU/HR) @ 140°F | Output Electric (BTU/HR) | |
| B-33.24SC | 33 | 1,346 | 712 | 886 | \$449 |
| B-48.24SC | 48 | 1,869 | 975 | 1,213 | \$463 |
| B-59.24SC | 59 | 2,291 | 1,194 | 1,485 | \$557 |

| WHITE Curved Towel Bar Radiators | | | | | LIST |
|----------------------------------|-------------|-------------------------|-------------------------|--------------------------|-------|
| Radiator Model | Height (in) | Output (BTU/HR) @ 180°F | Output (BTU/HR) @ 140°F | Output Electric (BTU/HR) | |
| B-33.24CW | 33 | 1,972 | 1,056 | 1,364 | \$257 |
| B-48.24CW | 48 | 2,881 | 1,519 | 2,046 | \$307 |
| B-59.24CW | 59 | 3,463 | 1,831 | 2,728 | \$332 |
| B-70.24CW | 70 | 3,967 | 2,103 | 3,072 | \$379 |

Note: Outputs based on supply water temperature shown, 20°F ΔT and 68°F Room Temperature.

| CHROME Curved Towel Bar Radiators | | | | | LIST |
|-----------------------------------|-------------|-------------------------|-------------------------|--------------------------|-------|
| Radiator Model | Height (in) | Output (BTU/HR) @ 180°F | Output (BTU/HR) @ 140°F | Output Electric (BTU/HR) | |
| B-48.24CC | 48 | 1,869 | 975 | 1,213 | \$478 |
| B-59.24CC | 59 | 2,291 | 1,194 | 1,485 | \$566 |



| TOWEL BAR ROBE HOOKS | | LIST |
|----------------------|-------------|------|
| Finish | Part Number | |
| WHITE | B-388132 | \$35 |
| CHROME | B-388133 | \$48 |



| AUTOMATIC HYGROSCOPIC AIR VENT | | LIST |
|--------------------------------|-----------------------|------|
| PART # | DESCRIPTION | |
| RV-508041 | 1/2" NPT Male | \$21 |
| RV-508100 | Replacement Cartridge | \$9 |

TOWEL BAR VALVES AND FITTINGS

Finished Towel Bar Valves



These fittings only work on Finished Valves.

Pair consisting of:

- Double angled convertible radiator valve fitted for thermostatic control head
- Lockshield valve, double angled connections
- Two pipe coverings/wall covering shells and allen key.

Max working pressure: 145 psi.

Temperature Range: 41-212°F.

Choose which side you would like the Valve to be on.

Thermostatic control head:

- Built-in sensor with liquid filled element
- For finished towel bar valves
- Comes with adapter, and tamper proof cap.
- Graduated temperature from: * - 5 = 44 - 82°F.

Compatible with single and multilayer PEX.

Max. working pressure: 150 psi.

Working temperature: 41-180°F.

Chrome plated nut.

| PART # | DESCRIPTION | COLOR | LIST |
|-----------|------------------|--------|-------|
| RV-400301 | Right side valve | White | \$167 |
| RV-400401 | Left side valve | White | \$167 |
| RV-400300 | Right side valve | Chrome | \$167 |
| RV-400400 | Left side valve | Chrome | \$167 |

| PART # | DESCRIPTION | COLOR | LIST |
|-----------|-------------------|--------|-------|
| RV-205005 | Thermostatic Head | White | \$68 |
| RV-200013 | Thermostatic Head | Chrome | \$122 |

| PART # | DESCRIPTION | LIST |
|-----------|--|-----------|
| RV-681101 | 3/8" Compression PEX | \$17/Pair |
| RV-681124 | 1/2" Compression PEX | \$17/Pair |
| RV-447014 | 1/2" Compression Copper Working Temperature = -13 - 248°F | \$12/Pair |

Basic Towel Bar Valves



Angled and Straight radiator valves.
Thermostatic versions allow use of a Non-Electric actuator for room temperature control.
Chrome plated.
Max. working pressure: 150 psi.
Temperature range: 40-212°F.

| PART # | DESCRIPTION | LIST |
|-----------|----------------------------|------|
| RV-338452 | 1/2" Angled Thermostatic | \$57 |
| RV-339452 | 1/2" Straight Thermostatic | \$57 |
| RV-342452 | 1/2" Angled Shutoff | \$31 |
| RV-343452 | 1/2" Straight Shutoff | \$31 |

Radiator Fittings



Universal PEX Fittings
Compatible with any ASTM F876 single layer PEX.
Max. working pressure: 150 psi.
Working temperature: 41-180°F.
Chrome plated nut.

Sweat and Compression connection fitting fits 1/2" copper.
Max. working pressure: 150 psi.
Working temperature: 41-250°F.
Chrome plated nut.

ALL FITTINGS COME WITH CONICAL RADIATOR ADAPTER

| PART # | DESCRIPTION | LIST |
|------------|-------------------------|-----------|
| RV-NA10536 | 3/8" Nominal PEX | \$33/Pair |
| RV-NA10534 | 1/2" Nominal PEX | \$33/Pair |
| RV-NA10537 | 5/8" Nominal PEX | \$33/Pair |
| RV-NA10535 | 1/2" Copper Sweat | \$37/Pair |
| RV-NA10555 | 1/2" Copper Compression | \$33/Pair |

PIPING SCHEMATIC WITH FITTINGS

DIVERTER VALVES

- 1 RV-NA10532 STRAIGHT DIVERTING VALVE
 - 2 RV-NA10533 ANGLED DIVERTING VALVE
- NOTE: ADJUSTABLE BY-PASS FROM 30-50%

ISOLATION VALVES

- 2 RV-NA10530 STRAIGHT ISOLATING VALVE
- 2 RV-NA10531 ANGLED ISOLATING VALVE

THERMOSTATIC CONTROL

- 3 RV-200000 THERMOSTATIC CONTROL HEAD
- ## TOWEL BAR VALVES

- 4 RV-339452 STRAIGHT THERMOSTATIC VALVE
- 4 RV-338452 ANGLED THERMOSTATIC VALVE

- 5 RV-343452 STRAIGHT SHUT-OFF VALVE
- 5 RV-342452 ANGLED SHUT-OFF VALVE

RADIATOR FITTINGS

(SOLD AS PAIR, CONICAL ADAPTERS ARE INCLUDED)

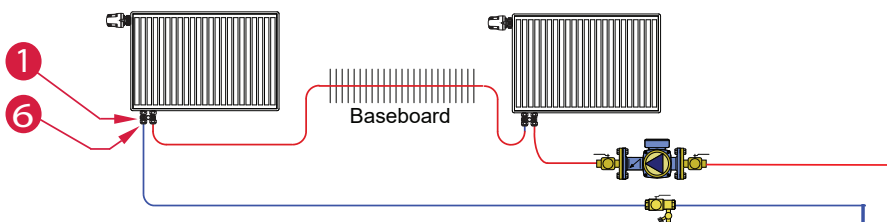
- RV-NA10555 1/2" COPPER COMPRESSION FITTING
 RV-NA10535 1/2" COPPER SWEAT TAIL FITTING
 RV-NA10536 3/8" PEX COMPRESSION FITTING
 RV-NA10534 1/2" PEX COMPRESSION FITTING
 RV-NA10537 5/8" PEX COMPRESSION FITTING

ACCESSORIES

- RV-8W SNAP 8" WHITE PLASTIC PIPE COVER
 RV-39W SNAP 39" WHITE PLASTIC PIPE COVER
 RV-12550 TWO PIPE RIGID ESCUTCHEON
 RV-449740 TWO PIPE FLEX ESCUTCHEON
 RV-200000 NON-ELECTRIC ACTUATOR

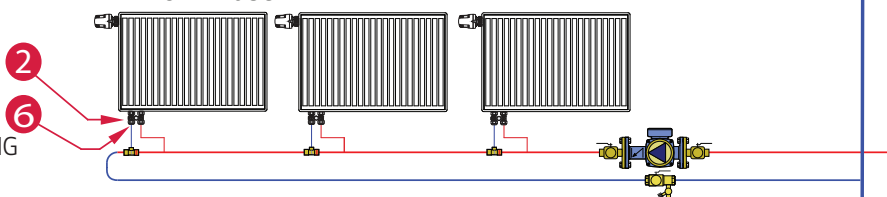
NOTES: SERIES PIPING

- RECOMMENDED MAX OF 3 RADIATORS ON ONE LOOP
- THERMOSTATIC CONTROL (RV-200000) CAN BE USED FOR INDIVIDUAL RADIATOR ADJUSTMENT



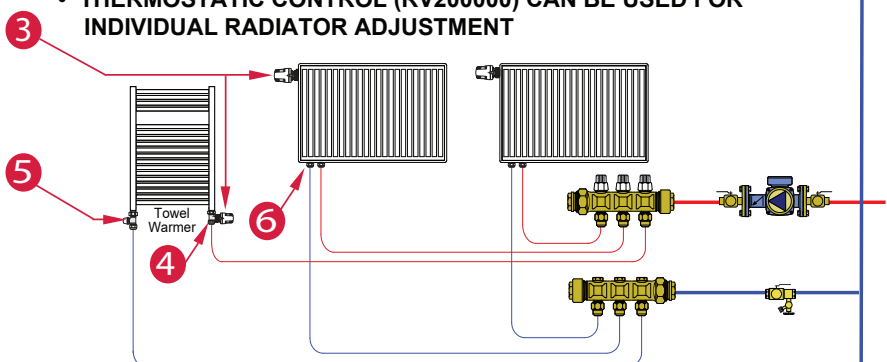
NOTES: MONOFLOW TEE PIPING

- MONOFLOW TEES SHOULD BE INSTALLED ON RETURN PIPE FROM RADIATOR
- SUPPLY AND RETURN TEES MUST BE AT LEAST 12 INCHES APART
- THERMOSTATIC CONTROL (RV200000) CAN BE USED FOR INDIVIDUAL RADIATOR ADJUSTMENT



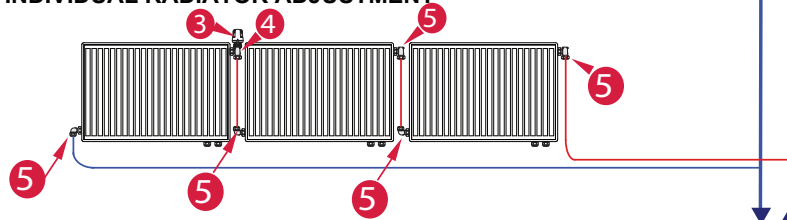
NOTES: MANIFOLD PIPING

- ISOLATION VALVES (RV-NA10530, RV-NA10531) ARE NOT REQUIRED, BUT ARE RECOMMENDED
- THERMOSTATIC CONTROL (RV200000) CAN BE USED FOR INDIVIDUAL RADIATOR ADJUSTMENT



NOTES: FLOW THROUGH PIPING using side tappings

- ISOLATION OR THERMOSTATIC VALVES (RV-338452, RV-342452, RV-339452, RV-343452)
- THERMOSTATIC CONTROL (RV200000) CAN BE USED FOR INDIVIDUAL RADIATOR ADJUSTMENT

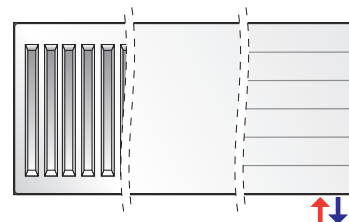


CONNECTION METHODS

bottom connection

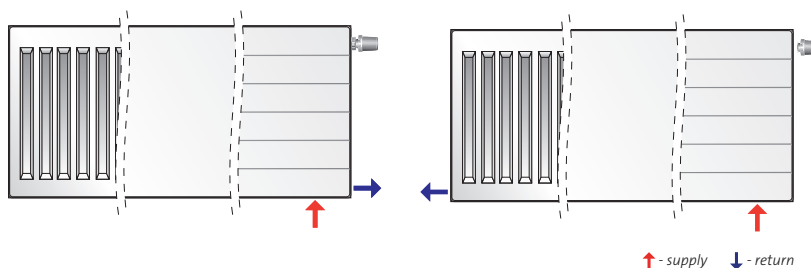
This connection method is used with the bottom-supplied radiators. The supply and return line axes are always located, respectively,

3" and 1" from the side edge of the radiator. Reversed connection will cause a drop in the heat output of over 30%.



intermediate connection

The bottom-supplied radiators can be connected in parallel with the side and bottom connections. Possible intermediate solutions presented at the drawings: side and flow-through connections.



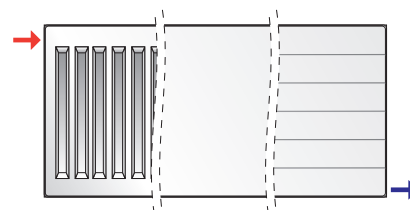
flow-through connection

Recommended for the radiators of length exceeding 80" and also for the radiators of length exceeding four times their height.

These connections provide even distribution of temperature over the entire length of the radiator. The supply line should be connected to the left or right connector pipe and the return line should be

connected to the opposite, bottom connections. Reversed connection will cause a drop in the heat output of over 30%.

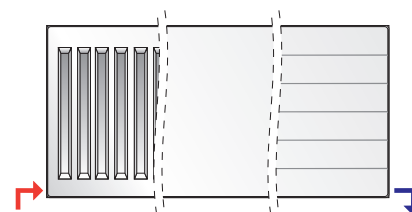
This flow-through connection method can be used in the side-supplied radiators as well as in the bottom-supplied radiators after the removal of a thermostatic valve insert.



opposite ends connection

With this connection method, the heat output of the radiators will be approximately 10% lower than the rated heat output. This type of connection method is most commonly used with the side-supplied radiators when the heating

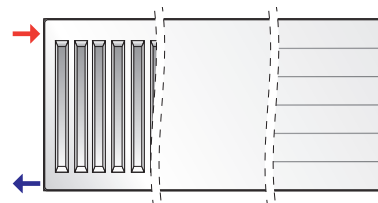
system piping is distributed in skirting boards above the floor. It can also be used with the bottom-supplied radiators after the removal of a thermostatic valve insert.



side connection

The most popular solution is connecting radiators on either the right or the left side. The supply line should be connected to the top and the return line to the bottom connector pipe of the radiator. Reversed connection will cause a drop in the heat output of over 30%. This side connection method

can be used in the side-supplied radiators as well as in the bottom-supplied radiators after the removal of a thermostatic valve insert.



CORRECTION FACTORS

| Water Temperature | | Room Temperature (°F) | | | | | | |
|-------------------|-------------|-----------------------|------|------|------|------|------|------|
| Supply (°F) | Return (°F) | 52 | 56 | 60 | 64 | 68 | 72 | 76 |
| 200 | 185 | 1.38 | 1.34 | 1.30 | 1.26 | 1.22 | 1.19 | 1.14 |
| 200 | 180 | 1.35 | 1.32 | 1.28 | 1.23 | 1.20 | 1.16 | 1.12 |
| 200 | 175 | 1.33 | 1.29 | 1.25 | 1.21 | 1.17 | 1.14 | 1.09 |
| 200 | 170 | 1.30 | 1.26 | 1.22 | 1.18 | 1.14 | 1.11 | 1.07 |
| 190 | 175 | 1.28 | 1.24 | 1.20 | 1.16 | 1.12 | 1.09 | 1.05 |
| 190 | 170 | 1.26 | 1.22 | 1.18 | 1.13 | 1.10 | 1.06 | 1.02 |
| 190 | 165 | 1.23 | 1.19 | 1.15 | 1.11 | 1.07 | 1.04 | 0.99 |
| 190 | 160 | 1.20 | 1.16 | 1.12 | 1.08 | 1.05 | 1.01 | 0.97 |
| 180 | 165 | 1.18 | 1.14 | 1.10 | 1.06 | 1.03 | 0.99 | 0.95 |
| 180 | 160 | 1.16 | 1.12 | 1.08 | 1.04 | 1.00 | 0.96 | 0.92 |
| 180 | 155 | 1.13 | 1.09 | 1.05 | 1.01 | 0.97 | 0.94 | 0.89 |
| 180 | 150 | 1.10 | 1.07 | 1.03 | 0.98 | 0.95 | 0.91 | 0.87 |
| 170 | 155 | 1.09 | 1.05 | 1.01 | 0.96 | 0.93 | 0.89 | 0.85 |
| 170 | 150 | 1.06 | 1.02 | 0.98 | 0.94 | 0.90 | 0.87 | 0.82 |
| 170 | 145 | 1.03 | 0.99 | 0.95 | 0.91 | 0.87 | 0.84 | 0.80 |
| 170 | 140 | 1.01 | 0.97 | 0.93 | 0.88 | 0.85 | 0.81 | 0.77 |
| 160 | 145 | 0.99 | 0.95 | 0.91 | 0.86 | 0.83 | 0.79 | 0.75 |
| 160 | 140 | 0.96 | 0.92 | 0.88 | 0.84 | 0.80 | 0.77 | 0.72 |
| 160 | 135 | 0.93 | 0.89 | 0.85 | 0.81 | 0.78 | 0.74 | 0.70 |
| 160 | 130 | 0.91 | 0.87 | 0.83 | 0.78 | 0.75 | 0.71 | 0.67 |
| 150 | 135 | 0.89 | 0.85 | 0.81 | 0.77 | 0.73 | 0.69 | 0.65 |
| 150 | 130 | 0.86 | 0.82 | 0.78 | 0.74 | 0.70 | 0.67 | 0.62 |
| 150 | 125 | 0.83 | 0.80 | 0.76 | 0.71 | 0.68 | 0.64 | 0.60 |
| 150 | 120 | 0.81 | 0.77 | 0.73 | 0.68 | 0.65 | 0.61 | 0.57 |
| 140 | 125 | 0.79 | 0.75 | 0.71 | 0.67 | 0.63 | 0.60 | 0.55 |
| 140 | 120 | 0.76 | 0.72 | 0.68 | 0.64 | 0.60 | 0.57 | 0.53 |
| 140 | 115 | 0.74 | 0.70 | 0.66 | 0.61 | 0.58 | 0.54 | 0.50 |
| 140 | 110 | 0.71 | 0.67 | 0.63 | 0.58 | 0.55 | 0.51 | 0.47 |
| 130 | 115 | 0.69 | 0.65 | 0.61 | 0.57 | 0.53 | 0.50 | 0.45 |
| 130 | 110 | 0.66 | 0.62 | 0.58 | 0.54 | 0.51 | 0.47 | 0.43 |
| 130 | 105 | 0.64 | 0.60 | 0.56 | 0.51 | 0.48 | 0.44 | 0.40 |
| 130 | 100 | 0.61 | 0.57 | 0.53 | 0.48 | 0.45 | 0.41 | 0.36 |
| 120 | 105 | 0.59 | 0.55 | 0.51 | 0.47 | 0.43 | 0.40 | 0.35 |
| 120 | 100 | 0.56 | 0.53 | 0.49 | 0.44 | 0.41 | 0.37 | 0.32 |
| 120 | 95 | 0.54 | 0.50 | 0.46 | 0.41 | 0.38 | 0.34 | 0.29 |
| 120 | 90 | 0.51 | 0.47 | 0.43 | 0.38 | 0.34 | 0.31 | 0.26 |

To use conversion table:

1. Find output at standard conditions listed.
2. Find conversion factor at desired supply, return and room temperatures.
3. New output equals output at standard conditions multiplied by conversion factor.

Example:

Radiator B-48.24SW has an output of 2,881 BTU at standard conditions (180°F Supply temp & 68°F Room temp).

The output at a supply temp of 160°F, a return temp of 145°F and a room temp of **72°F would be 2881 BTU x 0.79 = 2276 BTU.**

VIDO INTELLIGENT FAN CONVECTOR



VIDO intelligent fan convectors are quiet, compact and architecturally attractive. The compact design produces high heat outputs at low flow temperatures delivering more than twice the heat of a comparably sized radiator. VIDO's low water content coil(s) ensure heat will be supplied quickly while its variable speed fan maintains precise room temperature control. These features enable condensing boilers to achieve peak efficiencies not possible with other high temperature units.

VIDO is available in 2 and 4 pipe models. The two pipe VIDO can provide either heating or cooling. The 4 pipe model allows mixed heating and cooling in a single system. Its microprocessor, heat and fan controller provides daily or weekly programs for automatic room temperature control. The single piece casing provides an elegant look while hiding the piping going to the convector.

VIDO guarantees the heat exchanger coil for five years and two years for electric components.

Technical Specifications

- Materials: high quality, low carbon, cold rolled DCo1 steel in accordance with PN-EN 10130
- Connections: 2 or 4- $\frac{1}{2}$ " side connections,
- Working pressure: 147 PSI
- Test Pressure: 191 psi
- Color: RAL 9016 white, other colors are available upon special request



VIDO- INTELLIGENT FAN CONVECTOR

EFFICIENT &
EFFECTIVE
PERFORMANCE.



High outputs

The VIDO has a large surface area heat exchanger. This feature combined with forced convection from its built-in fan produces high heat outputs.



Space saving

Due to these high heat outputs, VIDO's are much smaller than panel radiators with equivalent outputs and so take up less wall space.



Silent

Sound levels were a key consideration during VIDO's development, so VIDO is the quietest fan convector available anywhere with no compromise on heat outputs.



Rapid heat

The VIDO has a much lower water content than other heat emitters, such as panel radiators and underfloor heating. In fact, the water content is less than 10% of that of a traditional radiator. Its lower thermal mass means the VIDO works quickly and efficiently.



Style

With its compact size, enameled finish and horizontal-ribbed profile, the VIDO delivers indoor comfort without compromising style.



Intelligent controls

VIDO has the most advanced electronic programmable controller for a fan convector. With its programmable thermostat designed to suit all lifestyle requirements with both 'easy' and 'full' operating modes plus a in-built option to link to a building energy management system.



Low temperature compatibility

The VIDO works very efficiently with low temperature systems, such as heat pumps and traditional systems, such as gas/oil-fired boilers.



Easy to install

Due to its solid, one-piece casing the VIDO is extremely easy to install.

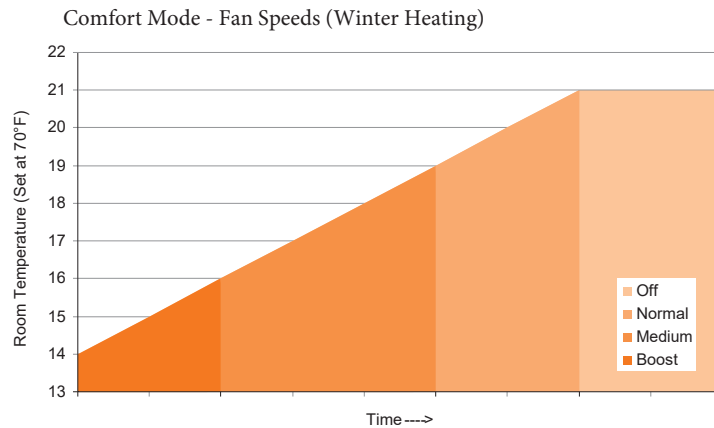


Cooling

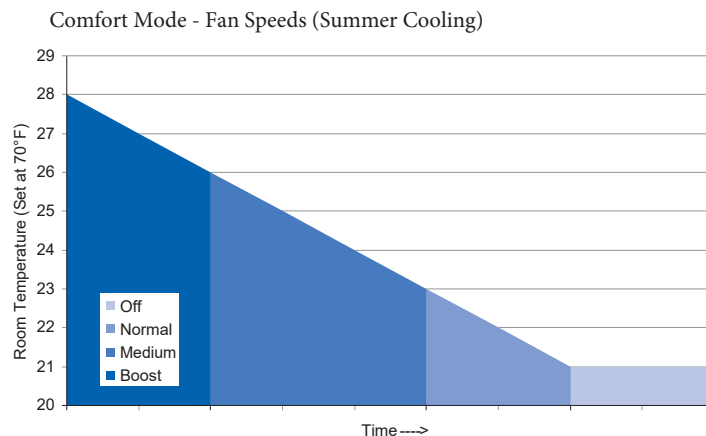
Not only is the VIDO great at heating spaces but when connected to a chilled water supply, it will rapidly cool spaces as well.

The intelligent, electronic thermostat control system in every VIDO provides a wide range of easy to use heating and cooling operating options. Its two-tier level of programming incorporates an 'easy' mode for basic operation and a 'full' mode for more advanced functions.

- Each VIDO is individually programmable
- 24/7 programmer with 1 hour time periods
- Night set-back function
- Lockable LCD backlit display
- Option to link to a building energy management system
- The controller will also automatically select and vary the fan speeds as required, depending on the current room temperature and the required room temperature set by the user.



Winter Heating - If the room temperature is 5°F or lower than the set point then the VIDO will activate boost mode, which will ensure the room heats up quickly. When the room is within 5°F of the set point then the VIDO will automatically switch to medium speed until the room temperature is within 2°F, then the normal fan speed will be selected. The VIDO will then maintain the normal fan speed until the set point has been achieved.

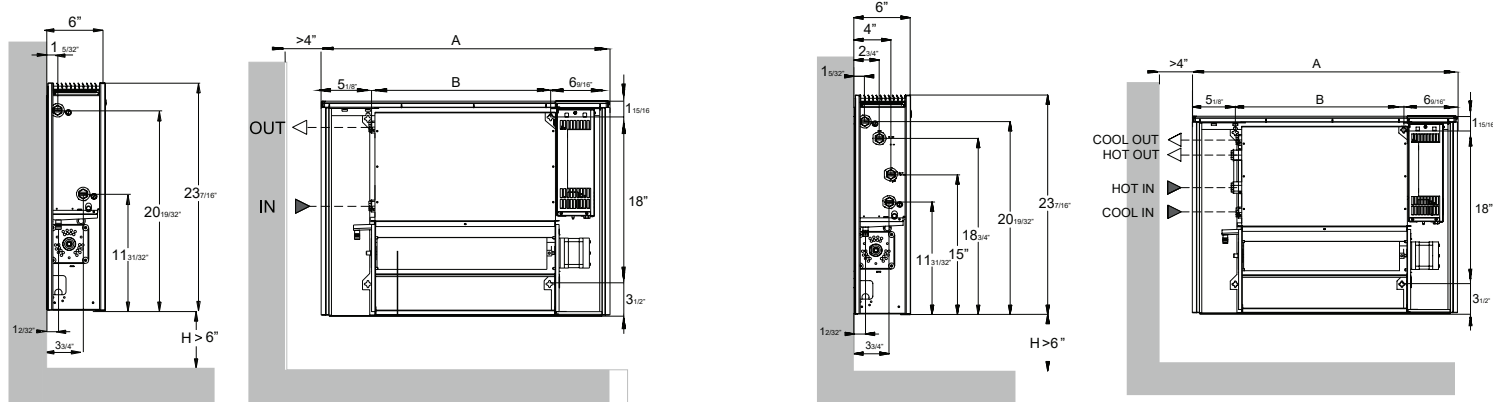


Summer Cooling - The process is the same as the Winter Heating cycle however the temperatures will be above the set point rather than below.

INTELLIGENT
& EASY TO USE
CONTROLS.



VIDO- DIMENSIONS AND OUTPUTS



| DIMENSIONS | | |
|------------------------|---------|-----------|
| Model | A | B |
| VDO2 2432 OR VDO4 2432 | 31 1/2" | 19 13/16" |
| VDO2 2440 OR VDO4 2440 | 39 3/8" | 27 11/16" |
| VDO2 2448 OR VDO4 2448 | 47 1/4" | 35 9/16" |
| VDO2 2456 OR VDO4 2456 | 55 1/8" | 43 7/16" |
| VDO2 2464 OR VDO4 2464 | 63 | 51 5/16" |

2- Pipe Unit

| Model | Type | Height (in) | Length (in) | Weight (lbs) | Fan Speed | Water Flow (GPM) | Outputs Heating (BTU/HR) | | Outputs Cooling (BTU/HR) | | List |
|-----------|-------------|-------------|-------------|--------------|-----------|------------------|--------------------------|-------------------------|--------------------------|----------|---------|
| | | | | | | | Output (BTU/HR) @ 180°F | Output (BTU/HR) @ 140°F | Total | Sensible | |
| VDO2 2432 | 2 Pipe Unit | 24 | 32 | | Normal | 1.5 | 8,423 | 5,304 | 2,389 | 1,799 | \$1,292 |
| | | | | | Medium | 1.5 | 11,098 | 6,990 | 3,843 | 2,829 | |
| | | | | | Boost | 1.5 | 14,874 | 9,377 | 5,625 | 4,188 | |
| VDO2 2440 | | 24 | 40 | | Normal | 2.0 | 11,531 | 7,260 | 3,451 | 2,570 | \$1,379 |
| | | | | | Medium | 2.0 | 15,134 | 9,533 | 5,461 | 4,021 | |
| | | | | | Boost | 2.0 | 20,593 | 12,984 | 7,864 | 5,857 | |
| VDO2 2448 | | 24 | 48 | | Normal | 2.65 | 13,919 | 8,761 | 5,188 | 3,178 | \$1,531 |
| | | | | | Medium | 2.65 | 18,505 | 11,655 | 6,689 | 4,922 | |
| | | | | | Boost | 2.65 | 26,323 | 16,597 | 9,959 | 7,416 | |
| VDO2 2456 | | 24 | 56 | | Normal | 3.1 | 16,364 | 10,299 | 5,085 | 3,788 | \$1,745 |
| | | | | | Medium | 3.1 | 21,882 | 13,783 | 7,918 | 5,826 | |
| | | | | | Boost | 3.1 | 31,755 | 20,023 | 12,058 | 8,980 | |
| VDO2 2464 | | 24 | 64 | | Normal | 3.5 | 18,864 | 11,784 | 5,901 | 4,396 | \$1,869 |
| | | | | | Medium | 3.5 | 25,262 | 15,911 | 9,143 | 6,730 | |
| | | | | | Boost | 3.5 | 37,178 | 23,443 | 14,154 | 10,539 | |

4- Pipe Unit

| Model | Type | Height (in) | Length (in) | Weight (lbs) | Fan Speed | Water Flow (GPM) | Outputs Heating (BTU/HR) | | Outputs Cooling (BTU/HR) | | List |
|-----------|-------------|-------------|-------------|--------------|-----------|------------------|--------------------------|-------------------------|--------------------------|----------|---------|
| | | | | | | | Output (BTU/HR) @ 180°F | Output (BTU/HR) @ 140°F | Total | Sensible | |
| VDO4 2432 | 4 Pipe Unit | 24 | 32 | | Normal | 1.32 | 5,961 | 3,752 | 2,292 | 1,708 | \$1,364 |
| | | | | | Medium | 1.32 | 7,880 | 4,961 | 3,650 | 2,687 | |
| | | | | | Boost | 1.32 | 10,613 | 6,686 | 5,342 | 3,977 | |
| VDO4 2440 | | 24 | 40 | | Normal | 1.54 | 8,116 | 5,109 | 3,277 | 2,441 | \$1,451 |
| | | | | | Medium | 1.54 | 10,671 | 6,720 | 5,186 | 3,818 | |
| | | | | | Boost | 1.54 | 14,557 | 9,175 | 7,468 | 5,562 | |
| VDO4 2448 | | 24 | 48 | | Normal | 1.76 | 9,717 | 6,118 | 4,927 | 3,018 | \$1,644 |
| | | | | | Medium | 1.76 | 12,911 | 8,133 | 6,353 | 4,674 | |
| | | | | | Boost | 1.76 | 18,340 | 11,565 | 9,458 | 7,044 | |
| VDO4 2456 | | 24 | 56 | | Normal | 1.98 | 11,404 | 7,179 | 4,830 | 3,598 | \$1,796 |
| | | | | | Medium | 1.98 | 15,227 | 9,593 | 7,520 | 5,533 | |
| | | | | | Boost | 1.98 | 22,040 | 13,901 | 11,452 | 8,528 | |
| VDO4 2464 | | 24 | 64 | | Normal | 2.2 | 13,125 | 8,263 | 5,604 | 4,175 | \$2,000 |
| | | | | | Medium | 2.2 | 18,048 | 11,360 | 8,684 | 6,391 | |
| | | | | | Boost | 2.2 | 26,820 | 16,895 | 13,442 | 10,009 | |

The 4-pipe VIDO has two coils enabling separate connections to boilers and chillers allowing a building to be heated and cooled simultaneously.

Vido Warranty terms and conditions

VIDO Warranty

1. Each VIDO fan convector is guaranteed for 1 year from installation date against any defects caused by faulty materials or manufacture. The defective unit will be replaced similar or mechanically comparable convector.
2. Each VIDO electronic controller is guaranteed for 2 years from installation date against defects caused by faulty materials or manufacture. The defective electronic controller will be replaced..
3. Each VIDO fan motor is guaranteed for 3 years from installation date against defects caused by faulty materials or manufacture. The defective fan motor will be replaced
4. Each VIDO hot or chilled water coil is guaranteed for 5 years from installation date against defects caused by faulty materials or manufacture. The defective coils will be replaced
5. The VIDO warranty is subject to the condition that a heating contractor whose principal occupation is the sale and installation of heating/cooling equipment must have installed the convector.
- 6.. The guarantee is valid for VIDO mounted in a forced hot water installation
 - in a closed system with an expansion tank;
 - powered by a boiler/chiller, the "low" side of a heat exchanger or heat pump;
 - made from steel / copper or plastic pipes with a oxygen diffusion barrier;
 - equipped with automatic air venting system
 - used for heating residential, office or institutional buildings, service stations or other buildings that are not exposed to permanent or temporary moistness of the radiator surface.
7. The guarantee is recognized when:
 - there is evidence of purchase, that is the invoice,
 - the radiators have been mounted in a closed loop, forced hot water heating system.
 - adhering to the requirements of the Installation manual
8. Maximum operating pressure in central heating installation for VIDO fan convectors not exceed 147 psi (11.7 bars) and a maximum operating temperature of 190F.
9. The guarantee does not cover convectors mounted:
 - in swimming pool areas, car washes, laundries, slaughterhouses or rooms with corrosive substances in the air,
 - in central heating installations connected to municipal water- supply system without protective valves, fittings, backflow preventors, etc.;
 - in central heating installations where water is removed for periods longer than advised in the installation guide;
 - in steam installations;
 - in central heating installations where the water quality rating level has been higher than advised
10. The guarantee doesn't cover damages to the Convector or its parts due to improper handling, storage, transport or misuse. It is recommended to remove the packaging only after construction is completed.
11. The convectors require periodical cleaning and it is recommended to use only soft and gentle fabrics that can be slightly moistened. It is not advised to use aggressive or corrosive cleaners (e.g. acidic solvents or agents with chlorine). The washable air filters need to be cleaned when required
12. It is forbidden to remove the water from the entire installation or its part and to leave it in this condition. It also refers to new installations with the tightness test. If there is a need to remove the water, e.g. due to renovation or maintenance works, the water must be removed only from the given part. After accomplishing all works the installation must immediately be filled with water.
13. The guarantee is granted provided the radiator has not been repaired or modified without QHT's approval.
14. Reporting faults or defects within the warranty period needs to be followed by requesting from the distributor a special claim form including the origin and details of damage. The distributor will accept the claim form and forwards it to QHT via registered letter, fax or e-mail within 48 hours. The invoice or its copy shall be attached to the form. In specific cases QHT may request a photo documentation of the product claim.

For prompt warranty service, notify the installer, who, in turn, will notify the distributor from whom he purchased the boiler. If this does not result in corrective action, contact Purmo through QHT with details in support of the warranty claim. All claims must be processed through proper trade channels. Contact with Purmo directly is not recommended for rapid claim settlement.

Radiator Warranty terms and conditions



Ecostyle Warranty

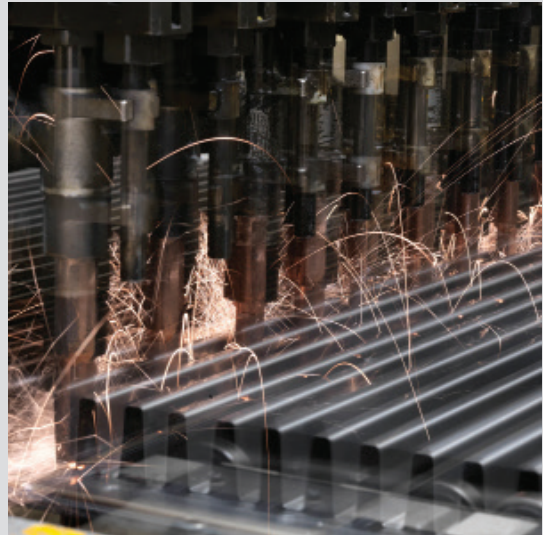
1. Each Ecostyle Panel Radiator is guaranteed for 10 years from installation date against defects caused by faulty materials or manufacture. The defective unit will be replaced with same or comparable panel radiator.
2. Each Ecostyle Towel Bar radiator is guaranteed for 5 years from installation date against defects caused by faulty materials or manufacture. The defective unit will be replaced with same or comparable radiator.
3. The guarantee is valid for radiators mounted in a forced hot water installation
 - in a closed loop system with an expansion tank;
 - powered by a boiler, hi/lo heat exchanger or heat pump;
 - made from steel / copper or plastic pipes with a oxygen diffusion barrier;
 - equipped with automatic air venting system
 - used for heating residential, office or institutional buildings, service stations or other buildings that are not exposed to permanent or prolonged moistness of the radiator surface.
4. The guarantee is valid when:
 - there is evidence of the radiator purchase, invoice, etc.
 - the requirements of the installation manual are followed.
5. Maximum operating pressure in a central heating installation for Ecostyle Panel Radiators and Ecostyle Towel Bar Radiators may not exceed 147 psi (11.7 bars) and a maximum operating temperature of 190F.
6. The guarantee does not cover radiators mounted:
 - in swimming pool areas, car washes, laundries, slaughterhouses or rooms with corrosive substances in the air,
 - in central heat installations connected to municipal water- supply without protective valves, fittings, backflow preventors, etc.;
 - in central heating installations where water is removed for periods longer than advised in the installation guide;
 - in steam installations;
 - in central heating installations where the water PH is higher than advised
7. The guarantee doesn't cover damages to the radiator or its parts (brackets, etc) due to improper handling, storage, transport or misuse. The radiators should be mounted within their original packaging. This packaging must be left on the radiator even if the heating system is activated while finishing construction or for pressurizing purposes. It is recommended to only remove the packaging after construction is completed.
8. The radiators require periodical cleaning and it is recommended to use only soft and gentle fabrics that can be slightly moistened. It is not advised to use aggressive or corrosive cleaners (e.g. acidic solvents or agents with chlorine). Claims for damage of varnished surfaces due to improper handling or maintenance will not be granted.
9. It is not advisable to remove the water from the entire installation or its part and to leave it in this condition. It also refers to new installations with the tightness test. If there is a need to remove the water, e.g. due to renovation or maintenance works, the water must be removed only from the zone. After finishing the work, the units must immediately be refilled with water.
10. The guarantee is granted provided the radiator has not been repaired or modified without QHT's approval.
11. Reporting defects within the warranty period needs to be processed through the distributor using a special claim form including the origin and details of the damage. The distributor will accept the claim form and forward it to QHT via letter, fax or e-mail within 48 hours. The invoice or its copy needs to be attached to the form. In specific cases QHT may request a photo documentation of the product claim.
12. For prompt warranty service, notify the installer, who, in turn, will notify the distributor from whom he purchased the boiler. If this does not result in corrective action, contact QHT with details in support of the warranty claim. All claims must be processed through proper trade channels. Contact with Purmo directly is not recommended for rapid claim settlement.



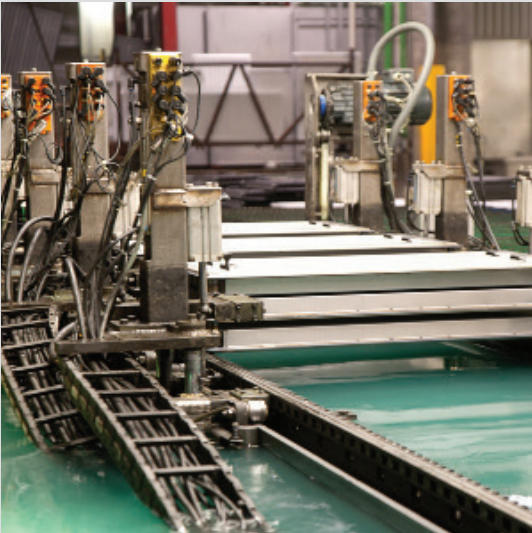
QUALITY IS OUR TOP PRIORITY



Top quality steel



High pressure welding process



Accurate test procedures



KTL coating (anti-rust) & epoxy powder coating



QHT INC
3560 LAFAYETTE RD
PORTSMOUTH, NH 03801
800-501-7697
www.qhtinc.com